

OTTOBRE

design®

6/2010 Winter

INSTRUCTIONS

Please read the following general instructions before starting your project.

How to choose the correct size

Children's pattern sizes are primarily chosen according to the child's height, and the pattern measurements are then adjusted to correspond to the child's other body measurements. Adults' sizes are chosen either according to the bust/chest measurement (e.g. blouses, jackets, coats) or the hip measurement (trousers, skirts). Take the measurements on top of thin underwear and compare them with the size chart. You will find detailed instructions for taking measurements on the next page.

How to find the pattern pieces on the pattern sheet

An overview of numbered, small-scale pattern pieces and a list of pattern pieces can be found next to the sewing instructions for each design. The appropriate pattern sheet is also stated. On the bottom edge of the pattern sheet, find the number with the correct color for the desired pattern piece and move your finger upward on the sheet until you locate the same number.

Trace the pattern on tissue paper, including all the necessary markings (e.g. grainlines, notches, pocket placements). The markings are also visible on the small-scale patterns next to the instructions. Make all adjustments to the pattern before cutting out the garment pieces.

Patterns

The patterns include hem allowances, button extensions and facings. When cutting out the garment pieces, add seam allowances of approx. 1 cm (depending on the fabric) to each edge of the pattern.

The position for the first or top buttonhole is marked on the pattern. On blouses and shirts the top

buttonhole on the front is approx. 4 cm from the neck seamline and the bottom buttonhole approx. 10 cm from the hemline. The rest of the buttonholes should be placed at regular intervals (6...9 cm) between these points.

For reasons of clarity, some of the pattern markings (e.g. positions for Velcro tapes and buttons) have only been printed on the smallest-size pattern of the design. Copy these on the pattern size of your choice in the corresponding places, measuring the distance from the pattern edge. Large pattern pieces are printed on the pattern sheet in two parts. Combine parts A and B before cutting out the fabric.

Cutting

Lay out the pattern pieces on a double layer of fabric observing the grainlines and foldlines. Draw the seam allowances on the fabric with tailor's chalk.

If you only need to cut a piece out once, observe the pattern markings and cut either on a fold (e.g. back, collar) or from a single layer of fabric (e.g. pocket).

The measurements for garment pieces listed under the heading "Cut also these pieces" (e.g. belt loops, belts) already include seam allowances.

When cutting out the garment, include allowances for fitting adjustments if necessary. Each design includes specific and detailed cutting instructions.

Garment sections to be interfaced are shaded in grey in the overview of small-scale pattern pieces. Knitted and woven interfacings are cut on the grain, while non-woven interfacings may be cut in any direction as they do not have a grain. Interfacing pieces are generally cut adding the same amount of seam allowance (approx. 1 cm) as on pieces cut from fashion fabric. However, a smaller seam allow-

ance may be used on interfacings for heavy-weight fabrics.

Materials

Fabric requirements are based on a fabric width of 145...150 cm. Pre-shrink the fabric before cutting either by pre-washing or by steam pressing. If you choose a different fabric from the one suggested in the magazine, allow for matching up patterns and for cutting with nap when calculating the fabric requirement.

Choose the interfacing on the basis of the fashion fabric's color, quality, weight and care instructions.

Since the quality and stretch of elastics vary, check the elastic lengths before sewing.

If a zipper is not available in a desired length, buy a longer zipper and shorten it as shown in the illustration on pattern sheet D.

Sewing

Read through the instructions before you start sewing. If you wish, baste and try on the garment before sewing. To make sewing easier, the instructions have been written on the basis of industrial working methods. The terms "inner"/"outer" and "left"/"right" refer to the garment when worn.

Finish off the construction seams of the garment as you sew, even if the instructions do not specifically mention this. To finish off seams you can either use a serger or a machine zig-zag stitch. On knit fabrics, stitch the seams using a machine stretch-stitch or a serger. No separate seam finish is necessary. Seams inside a lined garment do not necessarily have to be finished.

Hems (e.g. at the garment's lower edge or sleeve edges) are made by turning under the seam allowance and topstitching close to the edge. The width of the hem and the seam allowance is given in brackets; for example "sew hem (2 cm + 1 cm)"

means that the hem allowance is 2 cm and the seam allowance 1 cm.

Iron the garment seams as you sew and give the garment a final pressing when it is completed.

Practical tips

Gathering: Decrease the upper thread tension and increase the stitch length (stitch length 4...5). Sew two rows of gathering stitches 0.5 cm apart from each other on the right side of the edge to be gathered, placing one row on the seamline and the other within the seam allowance. Leave long thread ends. Gather the fabric by pulling simultaneously on both bobbin threads and spreading the gathers between your fingers evenly over the required length. The gathered edge is stitched in place between the gathering stitches using a regular straight stitch.

Easing: Easing stitches are sewn as gathering stitches but the bobbin threads are pulled just enough to make the edge curve slightly (e.g. in set-in sleeve caps).

Garments lined with knit

When the lining fabric is a knit and the fashion fabric a woven, cut the lining out with considerably narrower seam allowances to keep the lining from showing under the fashion fabric.



The designs, patterns, instructions, photos and articles in this magazine are protected under international copyright laws. Professional, industrial and commercial use of the material and manufacture under license is only possible under a written agreement with the copyright holder. For further information, contact us in writing, address: Studio Tuumat Oy, PL 2216, FIN-96201 Rovaniemi, Finland.

OTTOBRE design® or Studio Tuumat Oy has no obligation to compensate for possible financial losses resulting from misprints or other errors on the pattern sheet or in the instructions.

Copyright © Studio Tuumat Oy, Rovaniemi, Finland

MEASURING THE CHILD

For taking the measurements, you'll need a tape measure and a length of firm tape that is placed round the waist. You can sew a waist tape for this purpose of a strip of cotton folded in four (finished width 1.5 cm). Place the tape horizontally round the child's waist and secure with a safety pin.

The child should stand upright with a relaxed posture with arms hanging free at the sides.

The measurements are taken on top of underwear (briefs and a light-weight undershirt) close to the body, yet not too tight. It is advisable to take the measurements in front of a mirror so that you can see the position of the tape measure behind the child.

Height of the child:

With the child standing up with the back and heels against a wall, mark the height at the top of the head on the wall using a straight angle (e.g. a book). The height of the child is the distance measured from the floor to the marking.

Chest measurement:

Horizontal measurement round the body with the tape measure running over the chest and shoulder blades.

Waist measurement:

Measurement round the waist without the waist tape.

Hip measurement:

Horizontal measurement round the seat (the fullest part of the bottom).

Outseam length:

Distance from the waist to the floor measured from the lower edge of the waist tape.

Inseam length:

Distance from the crotch to the floor when the child is standing legs slightly apart with the weight evenly on both feet.

Shoulder width:

Distance from the base of the neck to the top of the arm.

Sleeve length:

Distance from the top of the arm to the wrist measured over the elbow with the arm slightly bent.

Back waist length:

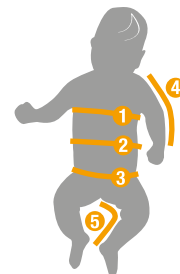
Distance from the most prominent vertebra at the base of the neck to the lower edge of the waist tape.

The measurements in the chart are **taken on the body**. The patterns include the necessary **allowances for ease of movement**.

SIZE CHARTS

BABIES 50-92 cm

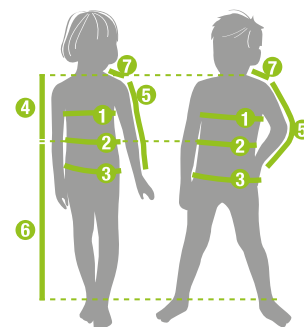
Height cm	50	56	62	68	74	80	86	92
1. Chest measurement	43	44.5	46	47.5	49	50.5	52	54
2. Waist measurement	46	47	48	49	50	51	52	53
3. Hip measurement	51	52	53	54	55	56	57	58
4. Sleeve length	18	20	22	24	26	28	30	32
5. Inseam length	15	18	21	24	27	30	33.5	37



TODDLERS 92-122 cm

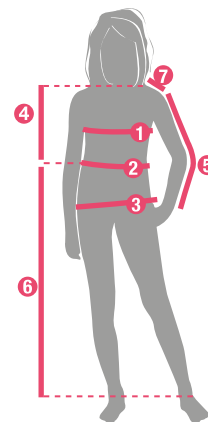
GIRLS AND BOYS

Height cm	92	98	104	110	116	122
1. Chest measurement	54	56	58	60	62	64
2. Waist measurement	53	54	55	56	57	58
3. Hip measurement	58	60	62	64	66	68
4. Back waist length	22.5	24	25	26.5	28	29.5
5. Sleeve length	32	34	36	38	40	42
6. Outseam length	54	58	62	66	70	74
7. Shoulder width	8.0	8.4	8.8	9.2	9.6	10



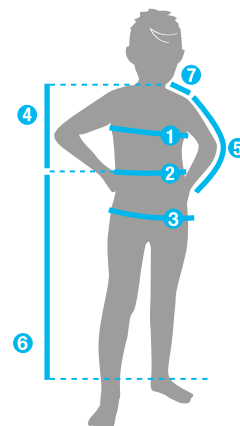
GIRLS 128-170 cm

Height cm	128	134	140	146	152	158	164	170
1. Bust measurement	66	68	71	73	76	79	82	85
2. Waist measurement	59	61	63	64	66	68	70	72
3. Hip measurement	70	72	75	79	82	85	88	91
4. Back waist length	31	32.5	34	35.5	37	38.5	40	41.5
5. Sleeve length	44	46	48	50	52	54.5	57	59.5
6. Outseam length	78	82	86	90	93.5	97	100.5	104.5
7. Shoulder width	10.4	10.8	11.2	11.6	12	12.4	12.8	13.2

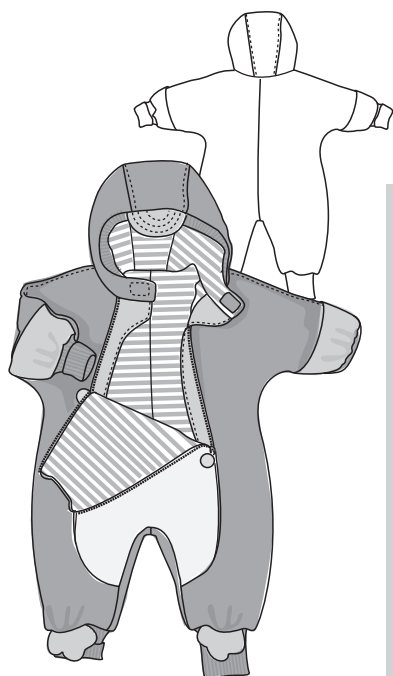


BOYS 128-170 cm

Height cm	128	134	140	146	152	158	164	170
1. Chest measurement	66	68	71	75	78	81	84	87
2. Waist measurement	59	61	63	66	68	70	72	74
3. Hip measurement	70	72	75	78	81	84	87	90
4. Back waist length	31	32.5	34	35.5	37	39	41	43
5. Sleeve length	44	46	49	51.5	54	56.5	59	61.5
6. Outseam length	78	82	86	90	93.5	97	100.5	104
7. Shoulder width	10.4	10.8	11.2	11.6	12	12.5	13	13.5



You can find these charts with measurements in inches on our website.

**MATERIALS**

- 50-50-55-60-60 cm white and 80-85-90-100-105 cm black velour knit (CO/PES)
- 10 cm piece of orange velour knit (CO/PES)
- 80-85-90-105-120 cm striped single jersey (CO) for lining
- 35-35-35-50 cm black ribbing, width 90 cm
- 25 cm orange cotton fabric (e.g. poplin)
- 220...260 cm stay tape, Vlieseline® Formband
- 50-50-55-60-60 cm interfacing, Vlieseline G 785
- 150-150-150-165-175 cm batting, weight 60-80 g/m², width 145 cm
- 2 zippers, length 34-35-37-38-40 cm
- 4 cm Velcro tape (both hook and loop sides), width 18 mm

CUTTING

Shell: Cut front panel from white velour knit. Cut side front panels, back panels and hood panels from black velour knit. Cut beak pieces, webbed foot pieces and zipper pulls from orange velour knit. Cut sleeve cuffs, bottom-leg cuffs and hood binding from ribbing. Cut wind flaps and fold-over hand flaps from cotton fabric.

Lining and batting: Cut lining pieces both from striped single jersey and batting as indicated on list of pattern pieces. Note! Cut out center parts of darts along stitching lines on hood side panels cut from batting.

Cut also two webbed-foot pieces, one beak piece and two zipper-pull pieces from batting.

SEWING

Construction techniques: Stitch seams with straight stitch. No seam finish is necessary as the garment is fully lined. Sew topstitching using presser-foot edge as guide unless otherwise instructed.

Stabilizing: Cut interfacing for front panel cut from velour knit, for outer wind-flap pieces and for all zipper-pull pieces, and fuse them in place. Cut pieces of stay tape for zipper placket edges on both shell and lining side-front panels as well as for zipper placket edges on lining front panel, and fuse them in place.

Batting: Pin batting pieces to wrong side of lining pieces and stitch them in place with straight stitch, stitching close to outer edge of seam allowance.

Preparation: Pin webbed foot pieces together in pairs, right sides facing, and pin batting piece under each pair. Stitch webbed foot pieces together, trim seam allowances and turn each webbed foot right side out. Machine-baste webbed feet to bottom-leg edges of side front panels

as marked on pattern, right sides together.

Pin beak pieces together, right sides facing, and pin batting piece under them. Stitch beak pieces together, trim seam allowances and turn beak right side out. Sew topstitching on beak as marked on pattern.

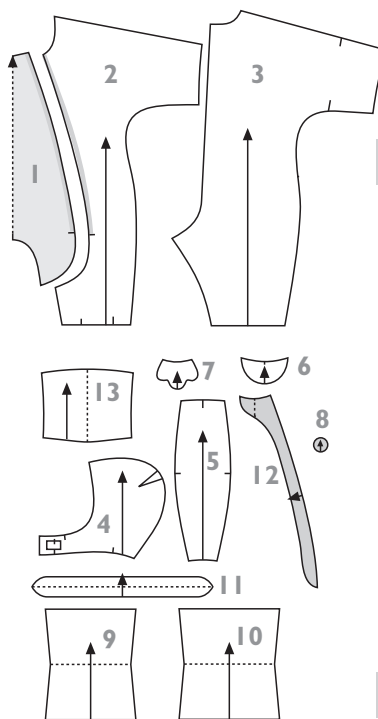
Fold and press fold-over hand flaps in half, wrong sides together, as marked on pattern. Pin flaps to sleeve edges of back panel, right sides together, and stitch their open edges to sleeve edges.

Pin wind flap pieces together in pairs, right sides facing, and stitch their outer edges and bottom corners together. Clip seam allowances along curves and press seams open. Turn each wind flap right side out and topstitch its outer edges close to edge. Stitch open edges of each wind flap together at the same time.

Hood: Stitch darts on both shell-hood and hood-lining side panels. Stitch shell-hood side panels to shell-hood center panel, fold seam allowances toward center panel and topstitch seams. Pin and machine-baste beak to face edge of hood, right sides together and aligning center-front marks. Fold hood binding in half, wrong sides together. Stitch binding to face edge of shell hood as marked on pattern, right sides together and stretching binding as you sew.

Stitch hood-lining side panels to hood-lining center panel. Place shell hood and hood lining within one another, right sides together. Pin and stitch face edges and front edges of hood sections together, with hood binding and beak in between.

Joining shell: Stitch center-back seam. Place side front panels and back panel right sides together and stitch shoulder seams. Fold seam allowances toward side front panels and topstitch seams. Stitch sleeve underarm seams and side seams.

**PATTERN PIECES**

cut

Shell

1 front panel	1
2 side front panel	2
3 back panel	2
4 hood side panel	2
5 hood center panel	1
6 beak	2
7 webbed foot	2+2
8 zipper pull	4
9 sleeve cuff	2
10 bottom-leg cuff	2
11 hood binding	1
12 wind flap	2+2
13 fold-over hand flap	2

Lining

1 front panel	1
2 side front panel	2
3 back panel	2
4 hood side panel	2
5 hood center panel	1

PATTERN SHEET A black

Pin front panel to side front panels and stitch each panel seam from leg inseam edge up to notch for zipper placket. Pin front and back panels together along leg inseam edges and stitch leg inseams.

Stitch side edges of each sleeve cuff and bottom-leg cuff together to form circles. Fold cuffs in half, wrong sides together, and stitch them to shell's sleeve edges and bottom-leg edges, right sides together and stretching cuffs as you sew.

Joining lining: Stitch center-back seam and shoulder seams. Stitch sleeve underarm seams and side seams. Pin front panel to side front panels and stitch each panel seam from leg inseam edge up to notch for zipper placket. Pin front and back panels together along leg inseam edges and stitch leg inseams.

Zippers: Pin and machine-baste wind flaps to underside of zippers as follows: right wind flap to right edge of one zipper, aligning outer edge of wind-flap seam allowances with edge of zipper tape, and left wind flap to left edge of the other zipper in the same way. Align top ends of zippers with top edges of wind flaps. At bottom end, wind flap is slightly shorter than zipper.

Pin and stitch zippers to placket edges of shell, right sides together. Use zipper foot and stitch zipper tapes in place one at a time.

Joining shell and lining: Turn both shell and lining inside out. Pin edges of lining front panel to zipper placket edges of shell front panel, right sides together and with zipper in between. Stitch zipper placket edges as well as front neckline edges together. Trim seam allowances across corners and turn front panel so that shell and lining are wrong sides together.

Pin and stitch zipper placket edges of

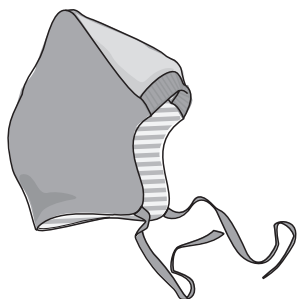
shell and lining side-front panels together, right sides facing. Bring sleeve edges of shell and lining end to end, line up edges and pin them together, right sides facing and with cuff in between. Stitch sleeve edges together, stretching cuff as you sew. Stitch bottom-leg edges of shell and lining together in the same way.

Turn garment right side out through open neckline. Machine-baste garment's neckline seam allowances together. Pin and stitch shell hood to garment's neckline, right sides together. At each front corner of neckline, place neck edges of hood lining and garment lining together, right sides facing, and, working from inside of hood, stitch neckline seam from each front corner toward shoulder as far as possible. Take care that no puckering is formed at front corners! Turn hood right side out. Pin open neck edge of hood lining to neckline and stitch it in place by hand. Stitch Velcro hook tape to right front edge of hood, on shell side, and Velcro loop tape to left front edge of hood, on lining side.

Zipper pulls: Pin zipper pull pieces together in pairs, right sides facing, and pin batting piece under each pair. Stitch outer edges of pull pieces together, leaving small opening for turning. Trim seam allowances and turn zipper pulls right side out. Insert zipper tab into zipper pull through opening for turning. Add batting into zipper pull if necessary. Attach zipper pulls to zipper tabs firmly by hand-stitching.

2. Igloo baby velour hat

42-44-46-48-50 cm (head circumference) Pages 55-56



MATERIALS

- 20-25 cm orange and 30-35 cm black velour knit (CO/PES)
- 30-35 cm striped cotton single jersey (CO)
- 7 cm ribbing (CO/EL)
- 30 cm lightweight batting (PES)
- 50 cm twill tape, width 10 mm

CUTTING

Cut front panels from orange velour knit and striped jersey, side panels from black velour knit and striped jersey, and front band from ribbing as indicated on list of pattern pieces. **Note!** Cut striped jersey panels (= lining) with slightly narrower seam allowances than velour knit panels.

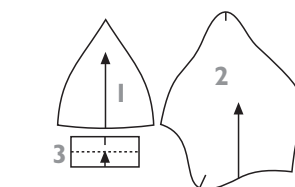
SEWING

Construction techniques: Stitch seams with straight stitch. No seam finish is necessary as the hat is fully lined.

Attaching batting: Lay velour-knit front

and side panels on batting, with their wrong side facing batting, and pin them to batting. Cut batting into three pieces and stitch hat panels to pieces of batting close to outer edges of their seam allowances. Trim off excess batting on edges of hat panels.

Joining: Cut twill tape in half and machine-baste pieces of tape to bottom-front corners of velour-knit side panels, placing them on right side of panels as marked on pattern. Fold front band in half, wrong sides together, and pin and stitch it to bottom edge of velour-knit



front panel, right sides together. Pin striped and velour-knit front panel together, right sides facing, and stitch their bottom edges together, with front band in between. Place front panels wrong sides together and machine-baste open edges of panels together along seam allowances.

Pin velour-knit side panels together, right sides facing, and stitch back seam. Pin striped side panels together and stitch back seam, leaving small opening for turning in the middle of seam. Pin side sections together, right sides facing, and stitch their bottom edges together. Pin and stitch

PATTERN PIECES

cut

1 front panel	1+1
2 side panel	2+2
3 front band	1

PATTERN SHEET A orange

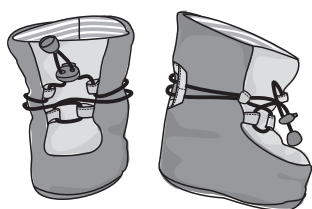
front panel to front edges of velour-knit side section, placing right sides of velour-knit panels together. Pin and stitch front edges of striped side section to front panel, placing right sides of striped panels together and folding seam allowances on bottom edge of side section to lining side.

Trim seam allowances at tip of hat and clip them along curves at bottom edge of hat. Turn hat right side out through opening on lining. Close opening for turning by hand-stitching. Neaten ends of twill tapes by cutting them diagonally or by stitching narrow hems at them.

3. Moonboots velour booties

16-17-18-19-20 (shoe size)

Pages 55-56



MATERIALS

- 20 cm orange and 25 cm black velour knit (CO/PES)
- 25 cm striped cotton single jersey (CO)
- 4 cm strip of orange cotton poplin (or 60 cm orange bias tape, width 36 mm when unfolded)
- 25 cm lightweight batting (PES)
- 25 cm interfacing, Vlieseline H 180
- 130 cm elastic cord
- 2 twin-hole cord locks
- 2 plastic cord ends

CUTTING

Cut front panels from orange velour knit and striped jersey, and side panels as well as soles from black velour knit and striped jersey.

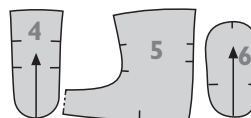
SEWING

Construction techniques: Stitch seams with straight stitch. No seam finish is necessary as the booties are fully lined.

Attaching batting: Lay striped jersey panels on batting, with their wrong side facing batting, and pin them to batting. Cut batting into smaller pieces and stitch striped jersey panels to batting close to outer edge of their seam allowances. Trim off excess batting on edges of panels.

Stabilizing: Cut interfacings for all velour knit panels and fuse them to wrong side of panels.

Preparation: Cut 4 cm x 44 cm piece from poplin. Fold and press poplin strip in half lengthwise, wrong sides together, turn seam allowances on long edges in and stitch edges together. (If you use bias tape: Fold bias tape in half and stitch edges together.) Cut eight 4 cm long pieces from strip (four pieces for each bootie), fold pieces in half and machine-baste them



to right side of velour-knit front panels as marked on pattern (= loops for cord). Cut two 5 cm pieces from poplin strip and machine-baste them at their ends to center-back seamline on velour-knit side panels, placing them on right side of panels as marked on pattern.

Joining: Pin and stitch velour-knit front panels to velour-knit side panels, right sides together. Pin and stitch center-back seams, right sides together. Pin and stitch velour-knit sole panel to velour-knit side panels, right sides together. Trim seam allowances on sole edges even.

Stitch striped jersey panels (= lining) together in the same way as velour knit panels, leaving opening for turning in center-back seam. Place bootie lining and exterior within one another, right sides together, and stitch edges of bootie opening together. Secure seam allowances at toe and heel of bootie exterior and lining together with a few hand stitches. Turn booties right side out through open-

PATTERN PIECES

cut

4 front panel	2+2
5 side panel	2+2
6 sole	2+2

PATTERN SHEET A orange

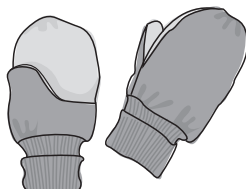
ing and place exterior and lining of each bootie wrong sides together. Close openings for turning by hand-stitching.

Fold loop stitched to center-back seam alongside seam and sew horizontal row of stitching across its midpoint. Cut elastic cord in half. Thread cords through loops on booties as follows: Pass cord upward through both lowest loops on front, cross ends of cord on front and wind them to bootie back. Pass ends of cord through their own separate loops at center-back seam, wind them to bootie front and pass them upward through upper loops. Thread each end of cord first through cord lock and then through plastic cord end. Adjust length of cord and tie ends in a tight knot. If necessary, glue ends of cord together with textile glue to further secure them.

4. Mimi velour mittens

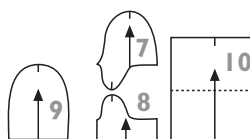
3-6-9-12 months

Pages 54, 56



MATERIALS

- 20 cm orange and 15 cm black velour knit (CO/PES)
- 20 cm striped cotton single jersey (CO)
- 20 cm lightweight batting (PES)
- 20 cm ribbing (CO/EL)



PATTERN PIECES

cut

7 palm	2+2
8 wrist panel	2+2
9 back of hand	2+2
10 cuff	2

PATTERN SHEET A orange

CUTTING

Cut exterior palm panels from orange velour knit and exterior backs of hand and wrist panels from black velour knit. Cut corresponding pieces also from striped jersey for lining. Cut cuffs from ribbing.

SEWING

Construction techniques: Stitch seams

with straight stitch. No seam finish is necessary as the mittens are fully lined.

Attaching batting: Lay striped jersey panels on batting, with their wrong side facing batting, and pin them to batting. Cut batting into smaller pieces and stitch striped jersey panels to batting close to outer edge of their seam allowances. Trim off excess batting on edges of panels.

Joining: Pin and stitch palm and wrist

panel together, right sides facing. Pin and stitch palm + wrist panel to back of hand, right sides together. Join striped lining pieces in the same way, leaving small opening for turning in straight part of one side seam. Trim seam allowances around tip of thumb.

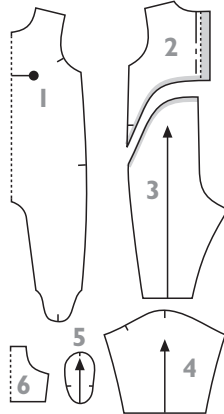
Fold each cuff piece in half, right sides together, and stitch its side edges to form circle. Fold cuffs wrong sides together

and machine-baste them to bottom edges of mitten exteriors, right sides together, stretching cuffs as you sew. Pin exterior and lining of each mitten together, right sides facing (with cuff in between) and stitch bottom edges of mitten together. Turn mittens right side out and close openings for turning by hand-stitching.

5. Cloud Boy footed one-piece

56-62-68-74-80 cm

Pages 56-57



PATTERN PIECES

cut

1 front	1
2 upper back panel	2
3 lower back panel	2
4 sleeve	2
5 sole	2
6 pocket	1

PATTERN SHEET A blue

CUTTING

Cut garment pieces from printed knit as indicated on list of pattern pieces. Do not add seam allowances to neck edges, sleeve edges, opening edges of pocket and top edges of lower back panels. Cut 4 cm wide binding strips from ribbing for finishing edges. If you use a binder attachment on your coverstitch machine to attach the bindings, cut the binding strips in the width that fits the binder.

SEWING

Construction techniques: Stitch seams with serger or with overedge stretch stitch on regular sewing machine. See general instructions for finishing edges with binding on p. 46 before starting.

Preparation: Cut interfacings for placket facings on upper back panels and fuse them in place. Finish sleeve edges and opening edges of pocket with rib bindings.

Finish raw edges of pocket and turn seam allowances to wrong side. Pin pocket to front panel as marked on pattern and stitch it in place close to edge.

Cut pieces of stay tape for top edges of lower back panels and bottom edges of upper back panels (measure required lengths of tape on pattern pieces and add seam allowances). Fuse stay tapes close to edge on lower back panels and seam-allowance away from edge on upper back panels.

Back: Finish raw edges of back placket facings and press folds at placket edges as marked on pattern. Fold back placket facings to right side on each upper back panel. Unfold one edge of bias tape and pin and stitch it to bottom edge of upper back panel, right sides together, aligning end of tape with fold at placket edge. Fold bias tape to wrong side and pin and stitch its free edge to upper back panel. Repeat

for the other upper back panel. Turn bottom corners of back placket right side out.

Pin lower back panels together and stitch crotch seam. Finish top edge of lower back panel with rib binding. Overlap upper and lower back panels, with lower panel on top, and pin and machine-baste them together along side seamlines.

Joining: Pin front and back panels together, right sides facing, and stitch shoulder seams. Stitch sleeves to armholes, right sides together. Stitch sleeve underarm seams and side seams. Stitch underarm seam allowances flat across width of sleeve-edge bindings.

Pin front and back legs together, right sides facing, and stitch leg inseams. Pin and stitch soles to garment's legs, right sides together. Fold back placket facings to wrong side and machine-baste their top edges to neckline. Finish neckline

MATERIALS

- 65-70-75-80-90 cm printed velour knit (CO/PES), interlock knit (CO) or cotton single jersey (CO/EL), stretch/recovery 20%
- 10 cm ribbing (CO/EL), width 90 cm
- 5 cm interfacing, Vlieseline G 785
- 70...80 cm stay tape, Vlieseline® Formband
- 55 cm cotton bias tape, width 35 mm when unfolded
- 12 small snap fasteners, ø 8 mm, Prym Mini 390 360

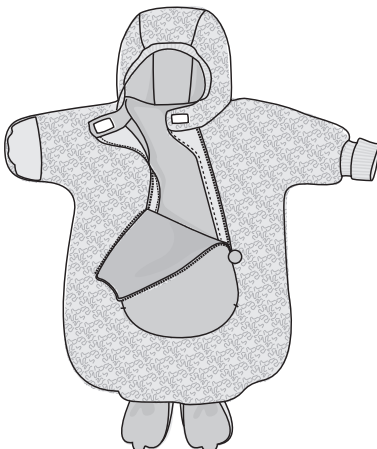
with rib binding, with ends of binding extending slightly beyond folded placket edges. Turn ends of binding to wrong side and stitch them to neckline with vertical rows of short straight stitch placed 5 mm from placket edge. Cut off excess binding close to stitching.

Snap fasteners: Attach four snap fasteners to back placket, placing them on center-back line as follows: top snap close to neckline binding, lowest snap close to bottom edge of placket and the other two at regular intervals between these. Attach socket halves of snap fasteners to top edge of lower back panel as follows: two snaps on each side of crotch seam, 3 cm away from it, and the rest at 5...6 cm intervals between the first snap and side seam on each side (total of eight snaps). Attach stud halves of snap fasteners to corresponding places at bottom edges of upper back panels, placing them in the middle of bias tape.

6. Kuutti baby bunting

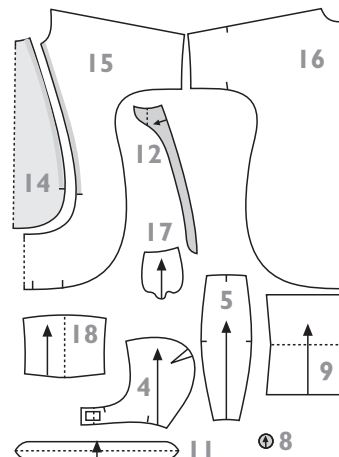
56-62-68-74-80 cm

Pages 50-51



MATERIALS

- 85-95-145-160-170 cm eco-cotton fur knit (CO)
- 105-115-145-160-170 cm beige velour knit (CO/PES)
- 25 cm printed babycord (CO)
- 20 cm white ribbing, width 90 cm
- 220...260 cm stay tape, Vlieseline® Formband
- 45-50-50-55-60 cm interfacing, Vlieseline G 785
- 35 cm batting, weight 60...80 g/m2
- 2 zippers, length 34-35-37-38-40 cm
- 4 cm Velcro tape (both hook and loop sides), width 18 mm



PATTERN PIECES

cut

Shell

14 front panel	1
15 side front panel	1
16 back panel	1
4 hood side panel	2
5 hood center panel	1
17 tail	2+2
8 zipper pull	4
9 sleeve cuff	2
11 hood binding	1
12 wind flap	2+2
18 fold-over hand flap	2

Lining

14 front panel	1
15 side front panel	1
16 back panel	1
4 hood side panel	2
5 hood center panel	1

PATTERN SHEET A black

CUTTING

Shell: Cut front panel from velour knit. Cut side front panel, back panel and hood panels from fur knit. Cut sleeve cuffs and hood binding from ribbing. Cut wind flaps and fold-over hand flaps from babycord. Cut tail pieces both from velour knit and fur knit.

Lining: Cut lining pieces from velour knit as indicated on list of pattern pieces.

Batting: Cut front panel and two zipper-pull pieces from batting.

SEWING

Construction techniques: Stitch seams with straight stitch. No seam finish is necessary as the garment is fully lined.

Stabilizing: Cut interfacings for shell front panel cut from velour knit, for outer wind-flap pieces and for all zipper-pull pieces, and fuse them in place. Cut pieces of stay tape for zipper placket edges on both shell and lining side-front panels as well as for zipper placket edges on lining front panel, and fuse them in place.

Batting: Pin batting piece to wrong side of shell front panel and stitch it in place with straight stitch close outer edge of seam allowance.

Preparation: Fold and press fold-over

hand flaps in half, wrong sides together, as marked on pattern. Pin flaps to sleeve edges of back panel, right sides together, and stitch their open edges to sleeve edges.

Pin wind flap pieces together in pairs, right sides facing, and stitch their outer edges and bottom corners together. Clip seam allowances along curves and press seams open. Turn each wind flap right side out and topstitch its outer edges close to edge. Stitch open edges of each wind flap together at the same time.

Hood: Stitch darts on both shell-hood and hood-lining side panels. Stitch shell-hood side panels to shell-hood center panel, fold seam allowances toward center panel and topstitch seams. Fold hood binding in half, wrong sides together. Stitch binding to face edge of shell hood as marked on pattern, right sides together and stretching binding as you sew.

Stitch hood-lining side panels to hood-lining center panel. Place shell hood and hood lining within one another, right sides together. Pin and stitch face edges and front edges of hood sections together, with hood binding in between.

Tail: Pin tail pieces together in pairs, right sides facing. Stitch pieces together, trim seam allowances and turn each tail half

right side out. Machine-baste tail halves to bottom edge of shell side-front panel as marked on pattern, right sides together.

Joining shell: Pin front panel to side front panel and stitch curved panel seam between notches for zipper plackets. Pin side front panel and back panel together, right sides facing, and stitch shoulder seams. Stitch sleeve underarm seams and seam around bottom of bunting.

Stitch side edges of each sleeve cuff together to form circles. Fold cuffs in half, wrong sides together, and stitch them to shell's sleeve edges, right sides together, stretching cuff as you sew.

Joining lining: Pin front panel to side front panel and stitch curved panel seam between notches for zipper plackets. Stitch shoulder seams. Stitch sleeve underarm seams and seam around bottom of bunting.

Zippers: Follow instructions for design no. 1.

Joining shell and lining: Turn both shell and lining inside out. Pin edges of lining front panel to zipper placket edges of shell front panel, right sides together and with zipper in between. Stitch zipper placket edges as well as front neckline edges together. Trim seam allowances

across corners and turn front panel so that shell and lining are wrong sides together.

Pin and stitch zipper placket edges of shell and lining side-front panels together, right sides facing. Bring sleeve edges of shell and lining end to end, line up edges and pin them together, right sides facing and with cuff in between. Stitch sleeve edges together, stretching cuff as you sew. Turn garment right side out through open neckline. Machine-baste garment's neckline seam allowances together. Pin and stitch shell hood to garment's neckline, right sides together. At each front corner of neckline, place neck edges of hood lining and garment lining together, right sides facing, and, working from inside of hood, stitch neckline seam from each front corner toward shoulder as far as possible. Take care that no puckering is formed at front corners! Turn hood right side out. Pin open neck edge of hood lining to neckline and stitch it in place by hand. Stitch Velcro hook tape to right front edge of hood, on shell side, and Velcro loop tape to left front edge of hood, on lining side.

Zipper pulls: Follow instructions for design no. 1.

7. Snow Flakes babycord dress

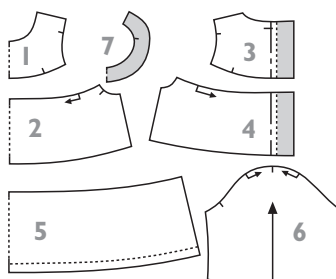
56-62-68-74-80-86-92 cm

Pages 53



MATERIALS

- 20 cm polka-dot, 40-40-45-45-50-50 cm floral and 25-30-45-50-55-55 cm plaid small-patterned babycord (CO)
- 20 cm interfacing, Vlieseline G 785
- 36-37-38-39-40 cm elastic, width 10 mm
- 15 cm brown and 15 cm white satin ribbon, width 4 mm
- 4 buttons, ø 15 mm



PATTERN PIECES

	cut
1 front yoke	1
2 front panel	1
3 back yoke	2
4 back panel	2
5 hem panel	2
6 sleeve	2
7 shaped facing	1

PATTERN SHEET A green

CUTTING

Cut back yokes and shaped facing from polka-dot, hem panels from plaid and other garment pieces from floral fabric.

SEWING

Construction techniques: Stitch seams with straight stitch and finish them with serger or zigzag stitch. Sew topstitching close to edge or seamline.

Stabilizing: Cut interfacings for shaped facing and back placket facings and fuse them in place (see areas shaded in grey on small-scale patterns).

Joining: Sew gathering stitches along top edges of front and back panels as marked on pattern and gather edges to fit yokes. Pin and stitch front panel to front yoke

and back panels to back yokes. Fold seam allowances toward yokes and topstitch seams.

Finish raw center-back edges and press folds at placket edges. Finish raw inside edges and ends of shaped facing. Stitch shoulder seams. Pin and stitch ends of shaped facing to center-back seam allowances, right sides together. Pin shaped facing to neckline, right sides together, and stitch neckline seam. Trim seam allowances across corners and clip them along curves. Understitch neckline seam allowances to shaped facing. Press neckline gently and attach inside edge of shaped facing to shoulder seam allowances. Overlap back placket edges, with left back panel on top and aligning center-back marks, and machine-baste them together

along bottom edges of back panels.

Sew gathering stitches along sleeve caps and gather sleeves to fit armholes. Pin and stitch sleeves to armholes, right sides together. Fold seam allowances toward body of garment and topstitch seams.

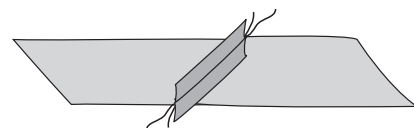
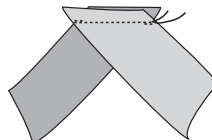
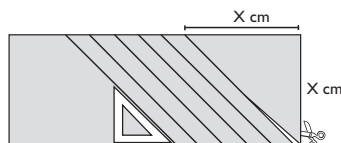
Sew gathering stitches along top edges of hem panels and gather edges to fit front and back panels. Pin and stitch hem panels to front and back panels. Fold seam allowances toward front and back panels and topstitch seams. Stitch sleeve underarm seams and side seams. Finish raw edge of bottom hem. Fold up, press and stitch bottom hem as marked on pattern.

Sleeve edges: Cut elastic in half. Finish raw bottom edges of sleeves. Stitch ends of each elastic together to form circles.

Machine-baste elastic to wrong side of sleeve-edge seam allowance, stretching it firmly as you sew. Fold sleeve-edge hem with elastic to wrong side and stitch it to sleeve through all layers along its edge.

Finishing: Stitch buttonholes and sew buttons on back placket, placing topmost buttonhole and button as marked on pattern and the rest at 5...6 cm intervals below it. Stitch satin ribbons at their mid-points to front yoke and tie them in bows. Secure bows with a few hand stitches, attaching bottom edge of shaped facing to front panel at the same time.

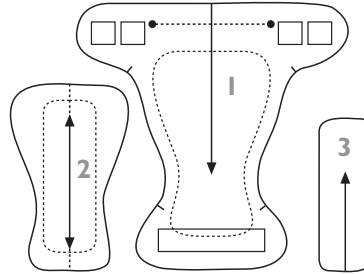
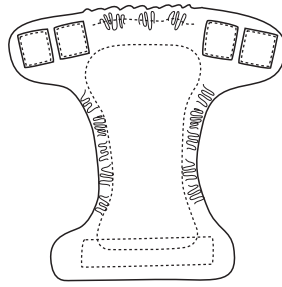
CUTTING AND JOINING BIAS BINDING



8. Vattumato® cloth diaper

50/56 - 62/68 - 74/80 - 86/92 cm

Pages 52-53



PATTERN PIECES

	cut
1 diaper panel	1+1
2 large soaker pad	1
3 small soaker pad	3

PATTERN SHEET A lilac

MATERIALS

The fabric requirement is for two diapers made in the same size.

- 50-50-55-55 cm printed velour knit (80% CO/20% PES) or similar soft absorbent knit or fabric (e.g. cotton flannel, knit terry, bamboo knit)
- 55-60-60-65 cm bamboo viscose/cotton knit (80% bamboo viscose/20% CO)
- 55 cm elastic, width 6 mm
- 50-52-54-56 cm Velcro loop tape, width 38 mm
- 16 cm Velcro hook tape, width 38 mm
- 30 cm polyester ribbon, width 3 mm

ABOUT FABRICS

Preshrink the fabrics by machine-washing and spin-drying them before cutting. If you have a drier, dry the fabrics in it to make them shrink as far to their final dimensions as possible.

CUTTING

All pattern pieces include seam allowances! Cut outside diaper panel from velour knit and other pieces from bamboo knit. Mark elastic placements on diaper panels with tailor's chalk or with small notches cut into edge of seam allowance.

SEWING

Construction techniques: Stitch seams with straight stitch. No seam finish is necessary as the diaper is fully lined.

Soaker pad: Lay small soaker pads one on top of the other. Pin stack of small pads to large soaker pad as marked on pattern and stitch it in place close to edge. Pin large soaker pad to inside diaper panel (cut from bamboo viscose), with

small soaker pads in between, and stitch it in place close to edge.

Cut 15-16-17-18 cm piece from elastic and machine-baste it to wrong side of inside diaper panel as marked on pattern, stretching elastic firmly as you sew.

Joining: Pin inside and outside diaper panels together, right sides facing, and stitch them together, leaving small opening for turning at top edge at back. Cut two 15-16-17-18 cm pieces from elastic and machine-baste them to leg openings, placing them within seam allowances on outside diaper panel and stretching them firmly as you sew. Turn diaper right side out and check that elastics fit the baby.

Close opening for turning by hand-stitching. Pin back of outside diaper panel to inside diaper panel along machine-basted elastic and stitch through all layers along machine-basting, stretching elastic as you sew.

Velcro tapes: Cut 17-18-19-20 cm piece from Velcro loop tape (round corners of Velcro tape to prevent them from scratch-

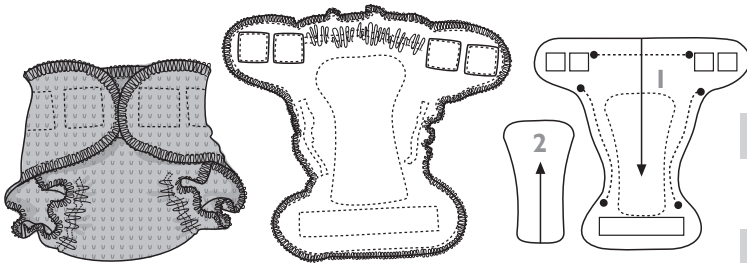
ing the baby's skin). Stitch Velcro tape to velour side of diaper front as marked on pattern. Cut two 4 cm pieces from Velcro hook tape (round the corners) and stitch pieces to corners of diaper back as marked on pattern, placing them on inside of diaper. Cut two 4 cm pieces from Velcro loop tape (round the corners) and stitch pieces to corners of diaper back as marked on pattern, placing them on inside of diaper (these function as laundry tabs, onto which the Velcro hook tapes are folded before washing the diaper in a washing machine). It is advisable to stitch around all Velcro tapes twice as they need to withstand opening and closing frequently.

Stitch polyester ribbon at its midpoint to bottom edge of Velcro tape on diaper front and tie it in a bow. Secure bow with a few hand stitches. The bow functions as a center mark which helps you to close the Velcro tapes symmetrically.

9. Vaapukkatalo wool diaper cover made from recycled knit

50/56 - 62/68 - 74/80 - 86/92 cm

Pages 52-53



PATTERN PIECES

	cut
1 diaper panel	1+1
2 soaker pad	1 or 2

PATTERN SHEET A brown

ABOUT MATERIALS

Check the product label of the recycled garment to make sure that it is 100% wool, or wool/cashmere or wool/alpaca blend. Wool absorbs 40% of its dry weight in moisture without feeling wet. Synthetic knits are not as absorbent as wool, and are therefore unsuitable for diaper covers. Cut out hard seams and worn-out areas from the recycled wool-knit garment. Wash the pieces of wool knit thoroughly using a detergent for washing wool (e.g. Sonett) and smoothen them by steaming before cutting out the diaper pieces.

CUTTING

All pattern pieces include seam allowances! Cut diaper panels and soaker pads from wool knit. (Cut either one or two soaker pads.) Mark elastic placements on

diaper panels with tailor's chalk or by hand-basting.

SEWING

Construction techniques: Use regular straight stitch for sewing the diaper and finish edges with serger or zigzag stitch.

Inside diaper panel: Pin soaker pad/pads to wrong side of inside diaper panel and stitch it/them in place close to edge using zigzag or straight stitch.

Cut 15-16-17-18 cm piece from elastic. Machine-baste piece of elastic along its both edges to wrong side of inside diaper panel, placing it on back of panel as marked on pattern and stretching it firmly as you sew. Cut two 15-16-17-18 cm pieces from elastic and machine-baste them to leg openings of inside diaper panel in the

same way as above.

Joining: Pin diaper panels together, wrong sides facing, and machine-baste their edges together with straight stitch. Trim seam allowances even and finish them together with serger or zigzag. Pin diaper panels together along elastics and stitch through all layers along rows of machine-basting.

Velcro tapes: Cut 17-18-19-20 cm piece from Velcro loop tape (round corners of Velcro tape to prevent them from scratching the baby's skin). Stitch Velcro tape to diaper-cover front as marked on pattern, placing it on outside of cover. Cut two 4 cm pieces from Velcro hook tape (round the corners) and stitch pieces to corners of diaper-cover back as marked on pattern, placing them on inside of cover. Cut two 4 cm pieces from Velcro loop tape (round the corners) and stitch pieces to

MATERIALS

- soft and clean recycled wool-knit garment (lightweight sweater, cardigan, scarf or similar) OR
- two 50 cm x 50 cm pieces of 100% wool knit
- 55 cm elastic, width 8 mm
- 25-26-27-28 cm Velcro loop tape, width 38 mm
- 8 cm Velcro hook tape, width 38 mm

corners of diaper-cover back as marked on pattern, placing them on inside of cover (these function as laundry tabs, onto which the Velcro hook tapes are folded before washing the diaper cover in a washing machine). It is advisable to stitch around all Velcro tapes twice as they need to withstand opening and closing frequently.

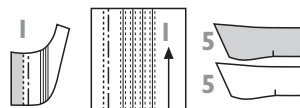
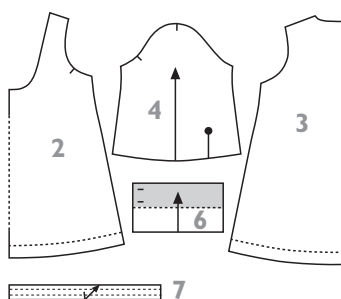
Diaper care: Treat the finished diaper cover with organic lanolin wool cure (e.g. Sonett Wool Care). Lanolin is absorbed into wool, making it soft and absorbent. Wool can be aired in fresh air and doesn't require washing very often. Naturally poop stains need to be washed off straight away. Natural gall soap is suitable for stain removal.

Read more about cloth diapers in our blog.

10. Eleanor dress

86-92-98-104-110-116-122-128 cm

Page 16



MATERIALS

- 35 cm solid-colored and 70-80-85-90-100-110-125-130 cm printed cotton fabric (CO)
- 30 cm interfacing, Vlieseline H 180
- 8 buttons, ø 10 mm

PATTERN PIECES cut

1 panel for front yoke	2
2 front yoke	
2 front	1
3 back	1
4 sleeve	2
5 collar	1+1
6 sleeve cuff	2
7 collar binding*	1

PATTERN SHEET B black

CUTTING

Cut rectangular panels for front yokes from solid-colored cotton fabric (front yokes will be cut out of these panels after tucks have been stitched).

Cut collar pieces from solid-colored and other garment pieces from printed cotton fabric as indicated on list of pattern pieces. Cut under collar with slightly narrower seam allowances than upper collar.

*Pattern piece for collar binding includes seam allowances. Cut collar binding on the bias.

SEWING

Construction techniques: Stitch seams with straight stitch and finish them with serger or zigzag stitch. Sew topstitching close to edges and seamlines unless otherwise instructed.

Preparation: Cut interfacings for areas shaded in grey on small-scale patterns and fuse them in place, i.e. for front placket facings, sleeve cuffs and upper collar. Slash sleeve edges for cuff plackets as marked on pattern. Stitch narrow hems at edges

of cuff plackets. Place placket edges right sides together and stitch small dart at the top of placket.

Front yokes: Press folds for tucks on rectangular panels for front yokes as marked on pattern. Fold panel wrong sides together along each tuck fold and stitch tuck 5 mm from fold. Stitch a total of four tucks on each panel. Fold tucks away from center front and machine-baste them in position. Lay pattern piece for front yoke separately on each rectangular panel and cut front yokes out as mirror images.

Finish raw edges of front placket facings and press folds at placket edges as marked on pattern. Overlap front placket edges of yoke panels, aligning center-front marks and with right yoke panel on top, and pin and machine-baste yoke panels together along bottom-edge seam allowances. Pin and stitch yokes to front panel, right sides together. Fold seam allowances toward front panel and topstitch seam.

Pin front and back panels together, right sides facing, and stitch shoulder seams.

Collar: Pin collar pieces together, right

sides facing, and stitch their outer edges. Trim seam allowances across corners and press seams open gently with point of iron. Turn collar right side out, press it flat and topstitch its outer edges. Machine-baste open edges of collar pieces together at the same time.

Pin and stitch collar to garment's neckline, with right side of under collar facing right side of garment and aligning ends of collar with center-front marks. Fold front placket facings to right side of garment, with ends of collar in between, and stitch their top edges to neckline seam. Pin and stitch one edge of collar binding to neckline seam, placing binding on top of upper collar right sides together so that its ends slightly overlap front facings. Trim seam allowances across front neckline corners, trim neckline seam allowances and clip them if necessary. Turn seam allowance on free edge of binding under and stitch turned-under edge to neckline close to edge. Turn front neckline corners right side out and press garment's front edges and neckline.

Joining: Pin and stitch sleeves to arm-

holes, right sides together. Stitch sleeve underarm seams and side seams. Finish raw edge of bottom hem. Fold up, press and stitch bottom hem as marked on pattern.

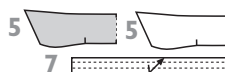
Sleeve cuffs: Fold each cuff piece in half, right sides together, and stitch its side edges. Turn cuffs right side out and press them flat. Sew gathering stitches at sleeve edges and gather edges to fit cuffs. Pin and stitch non-interfaced cuff half to sleeve edge, with right side of cuff facing wrong side of sleeve. Turn seam allowance on free edge of cuff to inside, pin edge carefully to sleeve edge and topstitch it in place close to edge. Topstitch around cuff at the same time.

Buttons: Stitch buttonholes and sew buttons on cuffs as marked on pattern. Stitch buttonholes and sew buttons on front yoke as marked on pattern (note that buttonhole placements have only been marked on pattern for the smallest size; work out and mark placements on bigger sizes correspondingly, starting from neckline).

11. Lovely Rita blouse

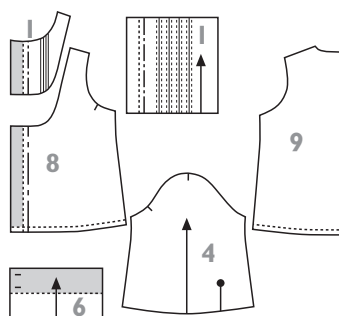
86-92-98-104-110-116-122-128 cm

Pages 14-15



MATERIALS

- 30 cm solid-colored cotton fabric (CO)
- 75-75-75-80-85-95-100 cm printed babycord (CO)
- 30 cm interfacing, Vlieseline H 180
- 10...12 buttons, ø 10 mm



PATTERN PIECES cut

1 panel for front yoke	2
2 front yoke	
8 front	2
9 back	1
4 sleeve	2
5 collar	1+1
6 sleeve cuff	2
7 collar binding*	1

PATTERN SHEET B black

CUTTING

Cut rectangular panels for front yokes from solid-colored cotton fabric (front yokes will be cut out of these panels after tucks have been stitched).

Cut other garment pieces from printed babycord as indicated on list of pattern pieces. Cut under collar with slightly narrower seam allowances than upper collar.

*Pattern piece for collar binding includes seam allowances. Cut collar binding on the bias.

SEWING

Construction techniques: Stitch seams with straight stitch and finish them with serger or zigzag stitch. Sew topstitching

close to edges and seamlines unless otherwise instructed.

Preparation: Cut interfacings for areas shaded in grey on small-scale patterns and fuse them in place, i.e. for front placket facings, sleeve cuffs and upper collar. Slash sleeve edges for cuff plackets as marked on pattern. Stitch narrow hems at edges of cuff plackets. Place placket edges right sides together and stitch small dart at the top of placket.

Front yokes: Press folds for tucks on rectangular panels for front yokes as marked on pattern. Fold panel wrong sides together along each tuck fold and stitch tuck 5 mm from fold. Stitch a total of four tucks on each panel. Fold tucks

away from center front and machine-baste them in position. Lay pattern piece for front yoke separately on each rectangular panel and cut front yokes out as mirror images.

Pin and stitch yokes to front panels, right sides together. Fold seam allowances toward front panels and topstitch seams. Pin front and back panels together, right sides facing, and stitch shoulder seams. Finish raw edges of front placket facings and press folds at placket edges as marked on pattern.

Joining: Pin and stitch sleeves to armholes, right sides together. Stitch sleeve underarm seams and side seams. Finish raw edge of bottom hem. Fold up, press

and stitch bottom hem as marked on pattern.

Collar, Sleeve cuffs: Follow instructions for design no. 10.

Buttons: Stitch buttonholes and sew buttons on cuffs as marked on pattern. Stitch buttonholes and sew buttons on garment's front, placing topmost button 1 cm down from neckline seam, third button 1 cm up from yoke seam and second button halfway between these. Place the rest of buttons the same distance apart from each other as the first three buttons.

12. Clarabella

velveteen pants

B 86-92-98-104-110-116-122-128 cm

Pages 14-15



MATERIALS

- 55-55-60-65-70-75-75-80 cm printed velveteen (CO)
- 20 cm polka-dot cotton fabric for pocket facings (CO)
- piece of interfacing, Vlieseline H 180
- zipper, length 8-8-9-9-10-10-11-11 cm
- button, ø 16 mm
- 25-30 cm velvet ribbon, width 9 mm

CUTTING

Cut pocket facings from cotton fabric and other garment pieces from velveteen as indicated on list of pattern pieces. Take note of the direction of nap on velveteen! Cut also 3.5 cm x 35 cm strip from velveteen for belt loops.

SEWING

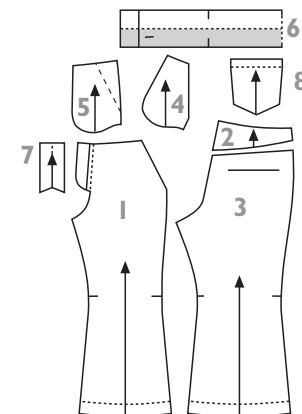
Construction techniques: Stitch seams with straight stitch and finish them with serger or zigzag stitch. Topstitch seams and edges with two parallel rows stitching unless otherwise instructed.

Stabilizing: Cut interfacing for waistband and fuse it in place (see area shaded in grey on small-scale pattern).

Front-hip pockets: Pin and stitch pocket

facing to pocket opening on pants front panel, right sides together. Understitch seam allowances at pocket opening to pocket facing. Turn pocket facing to wrong side and topstitch pocket opening with single row of stitching placed 12 mm from edge. Pin pocket piece to pocket facing, right sides together, and stitch bottom of pocket. Machine-baste edges of pocket to waist and side seam allowances of pants front panel.

Back pockets: Finish raw edges of pockets. Fold and press hems at opening edges of pockets as marked on pattern. Cut piece of velvet ribbon for opening edge of each pocket. Pin ribbon 10 mm down from opening edge of pocket and stitch it in place, catching pocket hem edge in stitching at the same time. Press seam



allowances on edges of pockets to wrong side. Pin and topstitch pockets to pants back panels as marked on pattern.

Joining: Stitch back yokes to pants back panels, right sides together. Fold seam allowances toward pants back panels and topstitch seams. Stitch leg inseams, fold seam allowances toward pants back panels and topstitch seams. Finish raw edges of crotch seam allowances. Stitch crotch seam. Apply zipper to placket, following illustrated instructions for fly-front zipper on p. 47. Stitch pants side seams, fold seam allowances toward pants back panels and edgestitch seams from waist down to bottom edge of front-hip pocket. Finish raw bottom edges of legs. Fold up, press and stitch hems at bottom edges of legs.

Belt loops: Finish one raw long edge of

Note! The pattern is designed for a slim child whose waist and hip measurements are 4 cm smaller than those in the size chart. **Read more on p. 46**

PATTERN PIECES

	cut
1 pants front	2
2 back yoke	2
3 pants back	2
4 pocket facing	2
5 pocket piece	2
6 waistband	1
7 fly shield	1
8 back pocket	2

PATTERN SHEET B red

belt loop strip. Fold strip in three lengthwise, with finished edge on top. Sew row of double-topstitching in the middle of strip and cut it into five equal-length pieces. Machine-baste belt loops to pants waist as shown in design sketch.

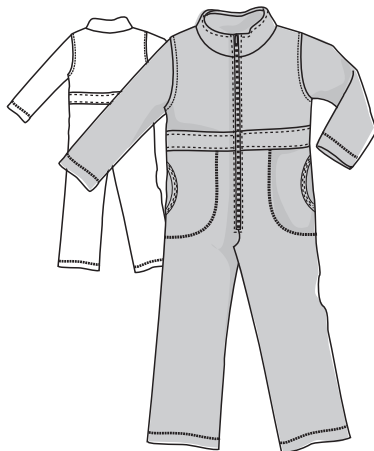
Waistline: Finish raw edge of non-interfaced half of waistband. Pin and stitch edge of interfaced half of waistband to pants waist, right sides together. Fold waistband right sides together at pants front and stitch its ends. Turn waistband right side out and pin its inside edge to pants waist. Stitch inside edge of waistband in place by stitching-in-the-ditch along waist seamline from right side of pants. Stitch free ends of belt loops to top edge of waistband. Stitch buttonhole and sew button on waistband.

13. Jumpin' in

velour coverall

86-92-98-104-110-116 cm

Page 7



MATERIALS

- 80-85-90-95-100-110 cm velour knit (CO/PES)
- 5 cm ribbing (CO/EL)
- 10 cm interfacing, Vlieseline G 785
- 100...130 cm stay tape, Vlieseline® Formband
- zipper, length 34-36-38-40-42-44 cm

CUTTING

Cut garment pieces from velour as indicated on list of pattern pieces. Take note of the direction of nap on velour knit. Cut two 3.5 cm x 10 cm strips from ribbing for finishing pocket openings.

SEWING

Construction techniques: Stitch seams with straight stitch and finish them with serger or zigzag stitch. Sew topstitching using presser-foot edge as guide unless otherwise instructed. Stitch decorative topstitching with serger coverstitch, or with suitable decorative overedge stitch on regular sewing machine (e.g. honey-comb stitch).

Stabilizing: Cut interfacing for outside collar piece and fuse it in place. Cut pieces of stay tape for shoulder edges on back panel (measure required length of tape on pattern piece and add seam allowances). Fuse tapes to wrong side of shoulder seam allowances. Cut also pieces of stay tape for zipper-placket edges on upper front panels, front waistbands and pants front panels and fuse them in place (measure required lengths of tape on pattern pieces; no seam allowance needs to be added).

Pockets: Pin and stitch one edge of pocket binding to edge of pocket opening on pants front panel, side right sides together. Fold the other edge of binding over to wrong side, pin it to pocket opening and stitch in place with twin needle from right side of pocket opening. Pin pocket piece under pants front panel (with both pants panel and pocket piece right sides up) and machine-baste it to waist and side seam allowances. Stitch bottom of pocket to pants front panel using decorative topstitching (e.g. serger coverstitch).

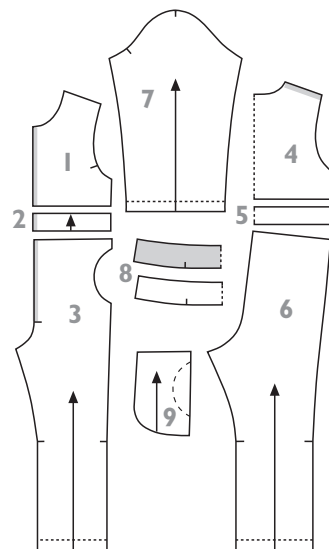
Joining: Pin and stitch front waistbands to upper front panels and pants front panels, right sides together. Fold seam allowances toward waistbands and topstitch seams. Stitch leg inseams. Finish

raw edges of center-front and crotch seam allowances. Stitch crotch seam from notch for zipper placket to back waist edge. Stitch back waistband to pants back panel and upper back panel, right sides together. Fold seam allowances toward waistband and topstitch seams.

Stitch shoulder seams, fold seam allowances toward back panel and topstitch seams. Stitch sleeves to armholes, fold seam allowances toward body of garment and topstitch seams. Stitch sleeve underarm seams and side seams. Fold up, press and pin hems at sleeve edges and bottom edges of legs as marked on pattern and stitch them with serger coverstitch.

Collar and zipper: Pin collar pieces together, right sides facing, and stitch their top edges together. Pin and stitch bottom edge of outside collar to garment's neck edge, right sides together. Open zipper. Stitch left zipper tape to garment's front, right sides together, aligning its top end with top edge of collar (finger-press seam allowances at top edge of collar open and fold neckline seam allowances toward collar as you stitch zipper in place). Stitch the other zipper tape in place in the same way.

Place inside and outside collar piece right sides together (turn seam allowance on bottom edge of inside collar to wrong side) and stitch center-front edges of collar pieces together, with zipper in between. Turn front corners of collar right side out. Pin bottom edge of inside collar piece, with its seam allowance turned under, to garment's neckline and stitch it in place by hand. Topstitch garment's front edges and top edge of collar using presser-foot edge as guide.



PATTERN PIECES

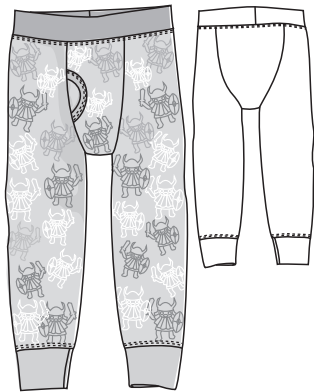
	cut
1 upper front panel	2
2 front waistband	2
3 pants front	2
4 upper back panel	1
5 back waistband	1
6 pants back	2
7 sleeve	2
8 collar	2
9 pocket piece	2

PATTERN SHEET B green

14. Pitkä Jussi long johns

86-92-98-104-110-116-122 cm

Pages 6-7



MATERIALS

- 45-50-50-55-60-65-70 cm striped or printed cotton single jersey (CO/EL) or interlock knit (CO), stretch/recovery 30%
- 10 cm dark-blue and 15 cm turquoise ribbing (CO/EL)
- 49...54 cm elastic, width 30 mm

CUTTING

Cut waistband from dark-blue and bottom-leg cuffs from turquoise ribbing and other garment pieces from single jersey or interlock knit as indicated on list of pattern pieces. Cut also 3.5 cm x 8-8-8-8-9-9-9 cm binding strip from turquoise ribbing for finishing edge of fly.

SEWING

Construction techniques: Stitch seams with serger. Stitch topstitching with two-needle serger coverstitch or with twin needle on regular sewing machine.

Joining: Fold bottom-leg cuffs in half, wrong sides together, and stitch them to bottom edges of legs, right sides together. Fold seam allowances toward pants panels and topstitch seams.

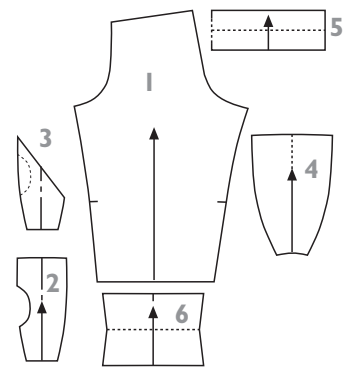
Finish edge of fly with binding as follows: Pin and stitch one edge of binding to edge of fly on outer fly panel, right sides together. Fold the other edge of binding over to wrong side, pin it to edge of fly and stitch in place with serger coverstitch

or with twin needle from right side of fly panel.

Finish raw diagonal top edge of inner fly panel. Pin outer fly panel and back panel together, right sides facing. Pin inner fly panel to back panel, wrong sides together. Stitch crotch edges of fly panels and back panel together.

Stitch leg inseams. Stitch inseam seam allowances flat for approx. 2 cm at bottom edges of legs. Pin and stitch crotch panel to pants panels, right sides together.

Waistline: Stitch side edges of waistband together to form circle. Fold band in half, wrong sides together. Measure and adjust elastic to fit the child (length of elastic = child's waist minus 5...6 cm) and stitch its ends together to form circle. Place elastic within folded waistband and machine-baste bottom edges of waistband together. Mark both waistband and pants waist edge into quarters. Pin and stitch waistband to pants waist edge, right sides together. Fold waist seam allowances down toward pants panels and topstitch seam.



PATTERN PIECES cut

1 pants panel	2
2 outer fly panel	1
3 inner fly panel	1
4 back panel	1
5 waistband	1
6 bottom-leg cuff	2

PATTERN SHEET B blue

15. Villi Viikinki undershirt

86-92-98-104-110-116-122 cm

Page 6



MATERIALS

- 35-40-40-45-45-50-50 cm dark-blue and 45-50-50-55-55-60 cm turquoise cotton single jersey (CO/EL) or interlock knit (CO), stretch/recovery 30%
- 15 cm turquoise ribbing (CO/EL)

CUTTING

Cut neckline binding and sleeve cuffs from ribbing. Cut sleeves from dark-blue and other garment pieces from turquoise single jersey as indicated on list of pattern pieces.

SEWING

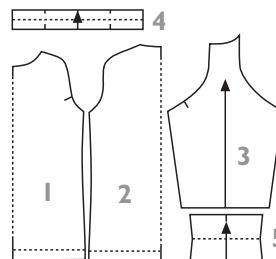
Construction techniques: Stitch seams

with serger unless otherwise instructed. Stitch topstitching with two-needle serger coverstitch or with twin needle on regular sewing machine.

Joining: Fold sleeve cuffs in half, wrong sides together, and stitch them to sleeve edges, right sides together. Fold seam allowances toward sleeves and topstitch seams. Stitch sleeves to front and back

panels with straight stitch and finish seams with serger. Fold seam allowances toward sleeves and topstitch seams.

Stitch ends of neckline binding together, right sides facing, to form circle and fold it in half, wrong sides together. Mark neckline and neckline binding into quarters. Pin and stitch binding to neckline, right sides together, stretching both neck edge



PATTERN PIECES cut

1 front	1
2 back	1
3 sleeve	2
4 neckline binding	1
5 sleeve cuff	2

PATTERN SHEET B orange

and binding as you sew to produce an elastic seam. Fold neckline seam allowances toward body of garment and topstitch neckline seam.

Stitch sleeve underarm seams and side seams. Stitch underarm seam allowances flat for approx. 2 cm at sleeve edges. Fold up, press and stitch bottom hem as marked on pattern.

16. Pikkumies boxer briefs

86-92-98-104-110-116-122 cm

Page 7



MATERIALS

- 20-20-20-20-20-25-25 cm thin-striped and 25-25-25-30-30-30 cm wide-striped cotton single jersey (CO/EL) or interlock knit (CO), stretch/recovery 30%
- small piece of pale-colored cotton single jersey
- 7 cm turquoise ribbing (CO/EL)
- 49...54 cm elastic, width 20 mm

CUTTING

Cut waistband from ribbing. Cut pants panels from wide-striped and front and back panels from narrow-striped knit. Cut outer crotch gusset from narrow-striped and inner crotch gusset* from solid-colored knit as indicated on list of pattern pieces.

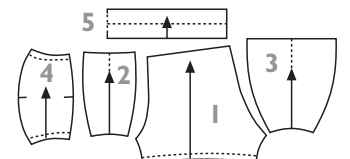
SEWING

Construction techniques: Stitch seams with serger. Stitch hems at leg openings as well as topstitching with two-needle serger coverstitch or with twin needle on regular sewing machine.

Stitch front and back panels to pants

panels, right sides together. Fold seam allowances toward front and back panels and topstitch seams. Pin and stitch crotch gussets to brief front, with outer gusset and brief front right sides together and with right side of inner gusset facing wrong side of brief front (seam allowances are concealed between gussets). Stitch gussets to brief back in the same way: stitch first outer gusset to brief back right sides together and stitch then inner gusset to brief back, concealing seam allowances.

Fold up, pin and stitch hems at leg openings as marked on pattern. Finish waistline following instructions for design no. 14.



PATTERN PIECES cut

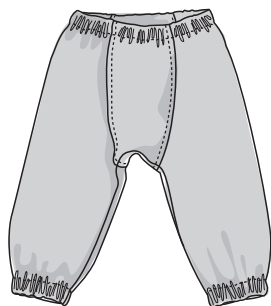
1 pants panel	2
2 front panel	1
3 back panel	1
4 crotch gusset	1+1*
5 waistband	1

PATTERN SHEET B lilac

17. Kuperkeikka velour pants

86-92-98-104-110-116 cm

Pages 8-9



MATERIALS

- 60-65-70-75-80 cm velour knit (CO/PES) or sweater knit, stretch/recovery 20%
- 95...108 cm elastic, width 30 mm

CUTTING

Cut garment pieces from velour knit as indicated on list of pattern pieces. Take note of the direction of nap on velour knit.

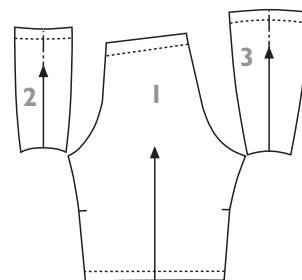
SEWING

Construction techniques: Stitch seams with straight stitch and finish them with serger or zigzag stitch. Sew topstitching using presser-foot edge as guide unless otherwise instructed.

Joining: Pin and stitch front and back panels to pants panels. Fold seam allowances toward front and back panels and

topstitch seams. Stitch leg inseams.

Finish raw bottom edges of legs and raw waist edge. Fold, pin and stitch casings at bottom edges of legs and at waist edge as marked on pattern. Leave small opening for inserting elastic on each casing. Cut two 23-23-24-24-25-25 cm pieces from elastic. Insert pieces into bottom-leg casings and stitch their ends together. Measure and adjust elastic to fit child's waist (length of elastic = waist measurement minus 5...6 cm). Insert elastic into waist casing and stitch its ends together. Close openings on casings.



PATTERN PIECES cut

- | | |
|---------------|---|
| 1 pants panel | 2 |
| 2 front panel | 1 |
| 3 back panel | 1 |

PATTERN SHEET C blue

18. Hippotamus Hoppulainen T-shirt

86-92-98-104-110-116 cm

Pages 8-9



MATERIALS

- 45-50-50-55-55-60 cm printed and 45-45-50-50-55-55 cm solid-colored single jersey (CO/EL), stretch/recovery 20%
- 15 cm ribbing (CO/EL)

CUTTING

Cut front and back panels as well as overarm panels from solid-colored and sleeve + side panels from printed single jersey as indicated on list of pattern pieces. Cut neckline binding and sleeve cuffs from ribbing.

SEWING

Construction techniques: Stitch seams with straight stitch and finish them with serger or zigzag stitch. Stitch bottom hem as well as topstitching at sleeve edges and neckline with two-needle serger coverstitch or with twin needle on regular sewing machine.

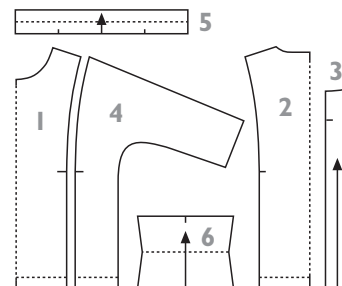
Joining: Stitch sleeve + side panels to front and back panels. Fold seam allowances toward front and back panels and topstitch seams using presser-foot edge as guide. Pin and stitch overarm panels to these completed front and back panels.

Fold seam allowances toward overarm panels and topstitch seams.

Fold sleeve cuffs in half, wrong sides together, and stitch them to sleeve edges, right sides together. Fold seam allowances toward sleeves and topstitch seams with serger coverstitch. Stitch sleeve underarm seams and side seams. Stitch underarm seam allowances flat for approx. 2 cm at sleeve edges. Leave garment inside out.

Stitch ends of neckline binding together, right sides facing, to form circle and fold it in half, wrong sides together. Mark neckline and neckline binding into quarters. Pin and stitch binding to neckline, right sides together, stretching both neck edge and binding as you sew to produce an elastic seam. Fold neckline seam allowances toward body of garment and topstitch neckline seam.

Turn garment right side out. Fold up, press and stitch bottom hem.



PATTERN PIECES cut

- | | |
|-----------------------|-----|
| 1 front | 1 |
| 2 back | 1 |
| 3 overarm panel | 2 |
| 4 sleeve + side panel | 2+2 |
| 5 neckline binding | 1 |
| 6 sleeve cuff | 2 |

PATTERN SHEET C green

19. Ines tunic top

92-98-104-110-116-122-128-134 cm

Pages 4-5, 15



MATERIALS

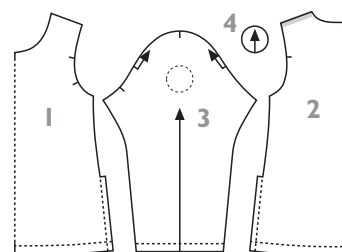
- 50-50-55-55-60-65-70-80 cm cotton single jersey (CO/EL), stretch/recovery 30%
- 20...25 cm stay tape, Vlieseline® Formband
- 100 cm taffeta ribbon, width 9 mm
- 40 seed beads in various colors
- contrast-color embroidery floss

CUTTING

Cut garment pieces from knit as indicated on list of pattern pieces. Do not add seam allowances to neck edges and edges of trim piece. Cut 5 cm wide binding strip from ribbing for finishing neckline. If you use a binder attachment on your coverstitch machine to attach the binding, cut the binding strip in the width that fits the binder.

SEWING

Construction techniques: Stitch seams with straight stitch and finish them with serger or zigzag stitch. Stitch bottom hem and sleeve-edge hems with serger coverstitch or with twin needle on regular sewing machine. See general instructions for finishing edges with binding on p. 46 before starting.



PATTERN PIECES cut

- | | |
|---------------|---|
| 1 front | 1 |
| 2 back | 1 |
| 3 sleeve | 2 |
| 4 trim piece* | 2 |

PATTERN SHEET C red

>>>

Sleeve trims: Pin trim pieces on sleeves as marked on pattern (with wrong side of trim facing right side of sleeve) and baste them in place close to edge without turning edges under. Cut approx. 50 cm long, three-strand piece from embroidery floss. Using embroidery floss, stitch trim piece in place by hand with short running stitches. Start stitching in the middle of the trim piece and work through the entire piece in a spiral pattern until you reach the outer edge of the piece. Thread beads onto the floss as you sew, spacing them evenly, and secure each bead to the trim piece with a few stitches. Tighten

the floss as you sew to form slight gathers on the trim piece and sleeve. To finish off, remove basting stitches.

Preparation: Cut pieces of stay tape for shoulder edges on back panel (measure required length on pattern piece and add seam allowances). Fuse tapes to wrong side of shoulder seam allowances. Sew gathering stitches along sleeve caps and gather sleeves to fit armholes.

Joining: Stitch left shoulder seam. Finish neckline with binding. Stitch right shoulder seam. Pin and stitch sleeves to armholes, right sides together. Fold seam allowances

toward body of garment and topstitch seams close to seamline.

Fold up, press and stitch sleeve-edge hems and bottom hems on front and back panels and as marked on pattern. Finish raw side-seam edges along length of casings. Pin sleeve underarm seams and side seams and stitch them with straight stitch from sleeve edge to bottom-hem edge. Finish seam allowances from sleeve edges to top ends of casings. Press side seams open along length of casings. Stitch outer edges of seam allowances to front and back panels, forming casings on each side

of side seam. Cut taffeta ribbon into four equal-length pieces. Insert ribbons into casings, pin their top ends to top ends of casings and stitch ribbon ends in place with horizontal row of stitching across casings. Tighten ribbons slightly and tie their bottom ends in bows.

Finishing: Stitch underarm seam allowances flat across width of sleeve-edge hems. Stitch shoulder seam allowances flat across width of neckline binding.

20. Minnie Pinafore dress

92-98-104-110-116-122-128-134 cm

Page 5



MATERIALS

- 50-55-60-60-65-70-70-75 cm solid-colored and 10 cm striped lightweight stretchy sweater knit (CO/EL) or cotton single jersey (CO/EL), stretch/recovery 30%
- 10 cm ribbing (CO/EL)
- 60...85 cm clear elastic tape, Framilon®, width 5 mm

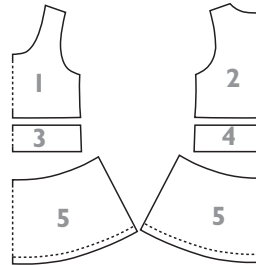
CUTTING

Cut waistbands from striped and other garment pieces from solid-colored knit. Do not add seam allowances to neck and armhole edges. Cut 5 cm wide binding strips from ribbing for finishing neckline and armholes. If you use a binder attachment on your coverstitch machine to attach the bindings, cut the binding strips in the width that fits the binder.

SEWING

Construction techniques: Stitch shoulder and side seams with serger. Stitch waist seams with straight stitch and finish them with serger. Stitch bottom hem with serger coverstitch, or with twin needle or suitable decorative overedge stitch on regular sewing machine. See general instructions for finishing edges with binding on p. 46 before starting.

Joining: Stitch right shoulder seam. Finish



PATTERN PIECES

cut

- 1 bodice front
- 2 bodice back
- 3 front waistband
- 4 back waistband
- 5 skirt front
- 5 skirt back

PATTERN SHEET C orange

neckline with binding. Stitch left shoulder seam. Finish armholes with binding. Pin and stitch waistbands to bodice front and back panels, right sides together. Fold seam allowances toward waistbands and topstitch seams close to seamline. Cut two pieces from clear elastic tape for gathering skirt panels (measure required lengths on pattern pieces for waistbands and add seam allowances).

Gather waist edges of skirt panels by machine-basting clear elastic tapes to waist

seam allowances, stretching tapes slightly as you sew. Pin and stitch skirt panels to waistbands, right sides together. Fold seam allowances toward waistbands and topstitch seams close to seamline. Pin and stitch side seams. Fold up, press and stitch bottom hem as marked on pattern. Stitch seam allowances on left shoulder seam and on both side seams flat across width of neckline and armhole bindings respectively.

21. Milla knit pants

92-98-104-110-116-122-128-134 cm

Pages 4-5, 17, 20



MATERIALS

- 55-60-65-65-70-75-80-85 cm double-face knit (PES/CO), stretchy sweater knit (CO/EL) or wool/viscose knit (VV/CV/EL), stretch/recovery 30%
- 44 cm velvet ribbon, width 10 mm
- 50...56 cm elastic, width 20 mm

CUTTING

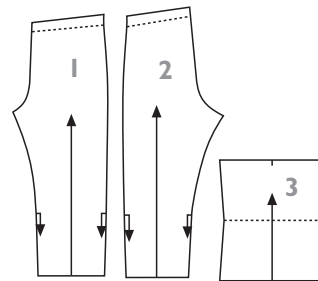
Cut garment pieces from knit as indicated on list of pattern pieces. *The striped pants make use of both the striped side (pants panels) and the solid-colored side (bottom-leg cuffs) of the double-face knit.

SEWING

Construction techniques: Stitch seams with serger or with overedge stretch stitch on regular sewing machine. Stitch another row of stitching with straight

stitch along gathered portions of seams.

Joining: Sew gathering stitches along side seam edges and leg inseam edges as marked on pattern and gather edges to length of 7 cm (measure length from outer edge of bottom-leg seam allowance to notch). Pin pants panels together, right sides facing, and stitch leg inseams. Stitch crotch seam. Stitch side seams. Finish raw waist edge. Fold, pin and stitch waist casing, leaving opening for inserting elastic. Adjust elastic to fit the child and insert



PATTERN PIECES

cut

- 1 pants front
- 2 pants back
- 3 bottom-leg cuff

PATTERN SHEET C black

it into waist casing. Stitch ends of elastic together and close opening on casing. Turn pants inside out.

Bottom edges of legs: Fold each bottom-leg cuff right sides together and stitch its side edges together to form circle. Fold cuffs in half, wrong sides together, and place them within pants legs, right sides together. Pin and stitch cuffs to bottom edges of legs. Turn pants right side out.

Bow: Cut 4 cm and 8 cm pieces from

velvet ribbon. Stitch ends of longer piece of ribbon together and fold ribbon to form a bow. Wrap shorter piece of ribbon around center of bow and stitch it in place. Cut 10 cm piece from velvet ribbon and stitch it at its midpoint to top end of gathering at side seam, right sides together. Fold each half of ribbon down so that right side is facing out. Stitch bow to side seam, placing it over ribbon. Make bow for the other side seam in the same way.

22. Dumbo hipster panties

86-92-98-104-110-116-122-128-134-140 cm

Pages 4



MATERIALS

- 30 cm printed single jersey (CO/EL), stretch/recovery 30%
- small piece of pale, solid-colored cotton single jersey
- 7 cm ribbing
- 50...56 cm elastic, width 20 mm

CUTTING

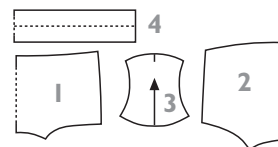
Cut waistband from ribbing, inner crotch gusset* from solid-colored single jersey and other garment pieces from printed single jersey as indicated on list of pattern pieces.

SEWING

Construction techniques: Stitch seams with serger. Stitch hems at leg openings as well as topstitching with two-needle serger coverstitch or with twin needle on regular sewing machine.

Pin and stitch crotch gussets to front panel, with outer gusset and front panel right sides together and with right side of inner gusset facing wrong side of front panel (seam allowances are concealed between gussets). Stitch gussets to back panel in the same way: stitch first outer gusset to back panel right sides together and stitch then inner gusset to back panel, concealing seam allowances.

Stitch side seams. Fold up, pin and stitch 1 cm wide hems at leg openings. Finish waistline following instructions for design no. 14.



PATTERN PIECES

cut

1 front	1
2 back	1
3 crotch gusset	1+1*
4 waistband	1

PATTERN SHEET C lilac

23. Happy Morning slippers

22-23-24-25-26-27-28-29-30-31-32-33-34 (shoe size) Page 4



MATERIALS

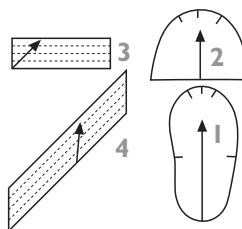
- pieces of polka-dot, gingham-check and mushroom-patterned cotton fabric (CO)
- piece of coated cotton fabric (CO-coated)
- piece of fusible volume fleece, Vlieseline H 640
- interfacing, Vlieseline G 730

SEWING

Construction techniques: Stitch seams with straight stitch. No seam finish is necessary as the slippers are fully lined.

Stabilizing: Cut pieces of fusible volume fleece for insoles and inner slipper uppers and fuse them in place. Cut pieces of interfacing for outsoles and outer slipper uppers and fuse them in place. Note! Cut pieces of fusible volume fleece and interfacing 7 mm smaller than pattern pieces.

Joining: Pin slipper upper pieces together in pairs, wrong sides facing, and machine-



PATTERN PIECES

cut

1 outsole	2
1 insole	2
2 slipper upper	2+2
3 binding for slipper upper	2
4 binding for slipper sole	2+2

PATTERN SHEET C rosa

CUTTING

Pattern pieces include all seam allowances. Cut insoles from mushroom-patterned, outsoles from coated and slipper uppers from polka-dot cotton fabric as indicated on list of pattern pieces. Cut pieces for right and left slipper as mirror images! Cut binding strips on the bias from gingham-check cotton fabric. To obtain required length of binding for slipper soles, join two strips of binding if necessary.

baste them together close to their outer edges. Finish straight edges of slipper uppers with binding as follows: Stitch one edge of binding to inside edge of slipper upper, right sides together. Turn seam allowance on other edge of binding to wrong side, and pin and stitch edge to outside of slipper upper close to edge. Sew gathering stitches around toe part of each slipper upper and gather uppers to fit slipper soles.

Pin slipper sole pieces together in pairs, wrong sides facing, and machine-baste them together close to their outer edges.

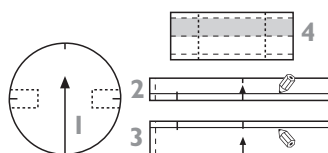
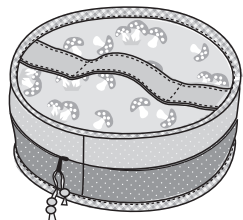
Sew decorative topstitching on soles as follows: Start stitching in the middle of sole and work through the entire sole in spiral pattern until you reach its outer edge. Space rounds of stitching approx. 1 cm apart.

Pin slipper upper to sole as marked on pattern, with inside of upper and insole right sides together, and machine-baste their outer edges together. Stitch ends of binding strip for sole together to form circle. Finish edge of sole with binding in the same way as edge of slipper upper above.

24. Good Evening vanity case

size 10 cm x 20 cm

Page 5



MATERIALS

- 20 cm pale-blue and 20 cm pink mushroom-patterned cotton fabric
- 6 cm blue polka-dot and 7 cm red polka-dot cotton fabric
- 35 cm gingham-check cotton fabric
- invisible zipper, length 55 cm
- 20 cm fusible volume fleece, Vlieseline H 640
- 20 cm interfacing, Vlieseline G 730
- 15 cm polyester ribbon, width 6 mm
- 3 plastic beads with large holes

CUTTING

Pattern pieces include all seam allowances. Cut outer base and lid panels from pale-blue mushroom-patterned and inner base and lid panels from pink mushroom-patterned fabric. Cut outer lid-side panel from blue polka-dot fabric and inner lid-side panel from pink mushroom-patterned fabric. Cut outer base-side panel from red polka-dot fabric and inner base-side panel from pale-blue mushroom-patterned fabric. Cut handle from pink mushroom-patterned fabric.

Cut 4 cm wide binding strips on the bias from gingham-check fabric for finishing top and bottom edges of vanity case as well as its side seam on the inside (join two strips of binding if necessary to obtain required lengths of binding). See p. 29.

SEWING

Construction techniques: Stitch seams with straight stitch. No seam finish is necessary as the vanity case is fully lined.

Stabilizing: Cut interfacings for all outer panels and fuse them in place. Cut pieces of fusible volume fleece for all inner panels and fuse them in place. **Note!** Cut pieces of fusible volume fleece and interfacing 7 mm smaller than pattern pieces.

Cut interfacing for handle and fuse it in place (see area shaded in grey on small-scale pattern piece).

Side panels: Open zipper. Stitch one zipper tape to outer lid-side panel and the other zipper tape to outer base-side panel as marked on pattern, right sides together, using invisible zipper foot. Stitch side panels together at each end of zipper with plain seams.

Pin and stitch inner lid-side and base-side panels to zipper edges, with wrong side of zipper facing right side of inner side panels and placing stitching 5 mm away from previous row of stitching. Stitch inner side panels together at each end of zipper with plain seams.

PATTERN PIECES

cut

1 base	1+1
1 lid	1+1
2 lid side panel	
outer	1
inner	1
3 base side panel	
outer	1
inner	1
4 handle	1

PATTERN SHEET C brown

Pin inner and outer side panels wrong sides together and machine-baste their open edges together. Pin side edges of side panel together to form circle, with outer panels right sides together, and stitch side seam. Trim seam allowances and finish seam with binding as follows: Stitch one edge of binding to underside of seam allowances, right sides together. Turn seam allowance on other edge of

binding to wrong side, wrap binding over seam allowances, and pin and stitch its turned edge to seam allowances close to edge.

Base and lid: Pin base panels together, wrong sides facing, and machine-baste their edges together. Pin and stitch lid panels together in the same way. Fold handle in half as marked on pattern, wrong sides together, and press. Turn seam allow-

ances on long edges to wrong side and stitch edges together. Topstitch also other long edge of handle. Pin handle to outside of lid and stitch its ends to seam allowances on edges of lid. Sew another row of stitching across each end of handle, placing rows 5 cm away from the first ones (handle will be slightly raised in the middle).

Joining: Pin and machine-baste base and

lid to side panel, with inner panels right sides together and aligning pattern marks. Finish top and bottom edges of vanity case with binding in the same way as above. Insert polyester ribbon into hole on zipper pull. Thread ends of ribbon through holes on beads and tie them in a tight knot.

25. Julia plaid tunic

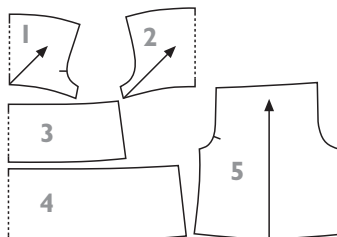
104-110-116-122-128-134-140 cm

Pages 17, 20



MATERIALS

- 95-110-120-130-140-150-160 cm lightly-creaked cotton fabric (CO/EL)
- 115...120 cm panne velvet ribbon, width 9 mm



PATTERN PIECES

	cut
1 bodice front	1
2 bodice back	1
3 upper skirt panel	2
4 lower skirt panel	2
5 sleeve	2

PATTERN SHEET D red

CUTTING

Cut garment pieces from fabric as indicated on list of pattern pieces. Cut bodice front and back panels on the bias.

Cut one 62-62-63-63-64-64-65 cm piece from velvet ribbon for neckline and two 24-24-25-25-26-26-27 cm pieces for sleeve edges (measurements include 2 cm seam allowances).

SEWING

Construction techniques: Stitch seams with straight stitch and finish them with serger or zigzag stitch. Sew topstitching close to edge or seamline.

Joining: Pin sleeves to bodice front and back panels and stitch raglan seams. Fold

seam allowances toward sleeves and topstitch seams. Sew gathering stitches along top edges of upper skirt panels and gather edges to fit bodice front and back panels. Pin and stitch upper skirt panels to bodice panels. Fold seam allowances toward bodice panels and topstitch seams.

Sew gathering stitches along top edges of lower skirt panels and gather edges to fit upper skirt panels. Pin and stitch lower skirt panels to upper skirt panels. Fold seam allowances toward upper skirt panels and topstitch seams.

Stitch sleeve underarm seams and side seams. Fold up, press and stitch bottom hem (1 cm + 1.5 cm). Finish raw neckline and sleeve edges. Fold and press 3 cm wide hems at neckline and sleeve edges.

Stitch hems close to inside edge of hem allowance.

Neckline: Baste-mark center-front and center-back points at neckline. Fold and pin soft 1 cm + 1 cm deep pleats at neckline as follows: Fold inverted pleat at center-front mark and fold knife pleats that open toward center-front on its each side, spacing them approx. 2 cm apart. Continue pleating around entire neckline (arrange pleats so that pleat folds are aligned with raglan seams). Finally, fold inverted pleat at center-back mark. Check length of neck edge with piece of velvet ribbon cut for neckline and baste pleats in position. Pin and stitch ends of neckline velvet ribbon together to form circle. Pin ribbon around neckline, approx. 15 mm

away from neck edge. Stitch ribbon in place along both edges.

Sleeve edges: Mark midpoint at each sleeve edge. Fold and pin soft 1 cm + 1 cm deep pleats at sleeve edges as follows: fold inverted pleat at midpoint mark and two knife pleats that open toward midpoint mark on its each side. Check length of sleeve edge using piece of velvet ribbon cut for sleeve edge and baste pleats in position. Pin and stitch ends of each sleeve-edge velvet ribbon together to form circles. Pin ribbons at sleeve edges, approx. 15 mm away from edge. Stitch ribbons in place along both edges.

26. Dear Prudence wool dress

128-134-140-146-152-158-164-170 cm

Pages 20-21



MATERIALS

- 95-100-110-120-130-140-150-155 cm lightweight felted wool fabric (WV), width 140 cm, stretch/recovery 10%
- invisible zipper, length 30 cm
- 10 cm interfacing, Vlieseline G 785

CUTTING

Cut garment pieces from wool fabric as indicated on list of pattern pieces. *Pattern piece for trim piece includes seam allowances.

SEWING

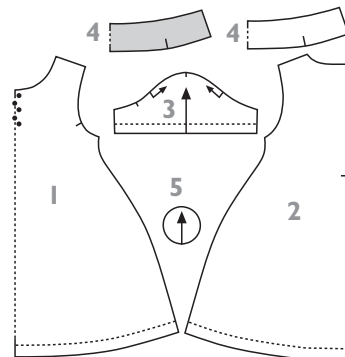
Construction techniques: Stitch seams with straight stitch and finish them with serger or zigzag stitch if necessary. Seam finish is not usually required on felted wool fabric since its cut edges do not fray.

Stabilizing: Cut interfacing for outside collar piece and fuse it in place.

Collar and zipper: Stitch shoulder seams and press them open. Pin collar pieces together, right sides facing, and stitch their top edges together. Understitch seam allowances to inside collar piece, stitching close to seamline. Pin and

stitch bottom edge of outside collar piece to garment's neck edge, right sides together.

Open zipper. Stitch left zipper tape to garment's center-back edge, right sides together, aligning its top end with top edge of outside collar piece and folding neckline seam allowances toward collar. Use invisible zipper foot for stitching. Stitch right zipper tape to center-back edge in the same way. Stitch center-back seam from bottom of zipper placket down to bottom hem and press seam open. Place inside and outside collar pieces right sides together with zipper in between (turn seam allowance on bottom edge of inside collar to wrong side) and stitch center-back edges of collar pieces together. Turn corners of collar right side out. Pin seam allowance on bottom edge of inside collar to wrong side. Sew bottom edge of inside collar to neckline by hand.



PATTERN PIECES

	cut
1 front	1
2 back	2
3 sleeve	2
4 collar	2
5 trim piece*	8

PATTERN SHEET D blue

Joining: Stitch side seams. Stitch underarm seams of sleeves. Sew rows of ease-stitching along sleeve caps as marked on pattern. Pull up bobbin threads of ease-stitching and shape sleeve caps by steaming them lightly. Pin and stitch sleeves to arm-

holes. Fold up and pin sleeve-edge hems and bottom hem. Steam hems and sew them by hand with catchstitches.

Trim pieces: Fold each trim piece into quarters (first in half and then in half

again) and secure folded corners with a few hand stitches. Stitch trim pieces at their corners to each side of center-front line as marked on pattern. Note that placements of trim pieces have only been marked on pattern for the smallest size.

Mark placements of trims on bigger sizes the same distance down from neckline seam.

27. Penny Lane

vest

92-98-104-110-116-122-128 cm

Pages 1, 12-13



MATERIALS

- 40-40-45-45-50-50 cm sweater knit (CO)
- 30 cm ribbing (CO/EL)
- 6-7 buttons, ø 18 mm
- 5 cm interfacing, Vlieseline H 180
- 20...30 cm stay tape, Vlieseline® Formband

CUTTING

Cut neckline and armhole bindings as well as hem band from ribbing and other garment pieces from sweater knit as indicated on list of pattern pieces. Make especially sure to cut neck edges and neckline binding with equal seam allowances.

SEWING

Construction techniques: Stitch seams with straight stitch and finish them with serger or zigzag stitch. Sew topstitching using presser-foot edge as guide unless otherwise instructed.

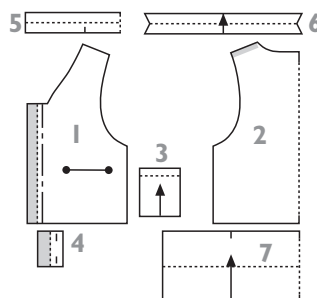
Stabilizing: Cut interfacings for front placket facings and button band and fuse them in place (see areas shaded in grey on small-scale patterns). Cut pieces of stay tape for shoulder edges on back panel (measure required length on pattern

piece and add seam allowances). Fuse tapes to wrong side of shoulder seam allowances.

Joining: Fold, press and double-topstitch hems at opening edges of pockets as marked on pattern. Turn and press pocket seam allowances to wrong side. Pin and stitch pockets to front panels as marked on pattern, stitching close to edge of pocket.

Stitch shoulder seams. Stitch side seams. Stitch ends of each armhole binding together to form circles. Fold bindings in half, wrong sides together. Pin and stitch bindings to armhole edges. Fold seam allowances toward body of garment and topstitch seams. Finish raw center-front edges.

Hemline: Fold button bands for hem band in half, right sides together; and stitch



PATTERN PIECES

	cut
1 front	2
2 back	1
3 pocket	2
4 button band for hem band	2
5 neckline binding	1
6 armhole binding	2
7 hem band	1

PATTERN SHEET D green

their bottom edges. Turn button bands right side out and machine-baste their open edges together. Pin button bands to ends of hem band, right sides together, and fold hem band in half, right sides together. Stitch ends of hem band, with button bands in between. Turn hem band right side out. Pin and stitch hem band to garment's bottom-hem edge, right sides together, aligning edges of button bands with folds at placket edges on front panels. Fold placket facings to right side of front panels and stitch their bottom edges to bottom-hem seam. Fold bottom-hem seam allowances toward front and back panels and topstitch seam.

Neckline: Fold neckline binding in half, wrong sides together, and stitch its long edge to neckline, right sides together. Note that stitching starts and finishes at neckline corners of front panels, seam-

allowance away from ends of binding. Clip diagonally to stitching at neckline corners of front panels. Pin and machine-baste ends of binding to top edges of front plackets, right sides together. Fold front placket facings to right side of front panels and stitch their top edges to front panel, with ends of neckline binding in between. Turn neckline corners right side out and topstitch neckline seam. Stitch inside edges of placket facings to front panels at the same time.

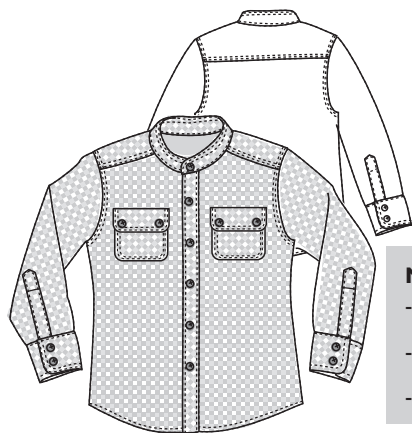
Buttons: Stitch buttonholes and sew on buttons. Place the topmost buttonhole close to neckline corner and the two lowest ones on button band at hem as marked on pattern. Space the rest of buttonholes at regular intervals between these.

28. Abbey Road

gingham-check shirt

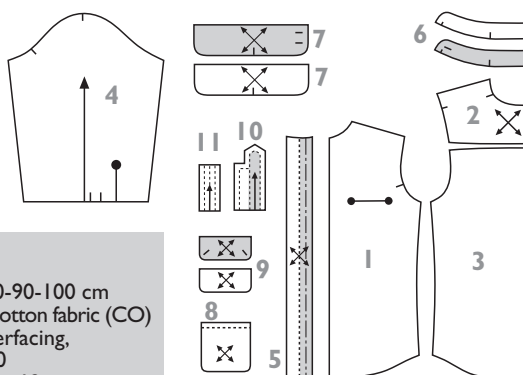
92-98-104-110-116-122-128 cm

Pages 1, 12-13, 18-19, 64-65



MATERIALS

- 70-75-80-85-90-90-100 cm gingham-check cotton fabric (CO)
- 15...20 cm interfacing, Vlieseline H 180
- 14-15 buttons, ø 12 mm



PATTERN PIECES

	cut
1 front	2
2 shoulder yoke	1
3 back	1
4 sleeve	2
5 button band	2
6 collar	2
7 sleeve cuff	4
8 pocket	2
9 pocket flap	4
10 placket overlap*	2
11 placket underlap*	2

PATTERN SHEET D black

CUTTING

Cut garment pieces from fabric as indicated on list of pattern pieces; cut shoulder yoke, button bands, sleeve cuffs, pockets and pocket flaps on the bias. *Pattern pieces for cuff placket overlap and under-lap include seam allowances.

SEWING

Construction techniques: Stitch seams with straight stitch and finish them with serger or zigzag stitch. Topstitch seams

and edges with two parallel rows of stitching unless otherwise instructed.

Stabilizing: Cut interfacings for areas shaded in grey on small-scale patterns and fuse them in place (note that interfacing is only applied to outer pocket-flap and sleeve-cuff pieces).

Front pockets: Stitch hems at opening edges of pockets. Sew rows of ease-stitching along seam allowances on curved pocket edges. Make cardboard template using pattern piece for pocket. Turn and

press seam allowances on pocket edges to wrong side; place template on wrong side of pocket piece and pull up bobbin thread of ease-stitching so that seam allowance is turned over edge of template. Topstitch pockets to front panels as marked on pattern.

Pin pocket flap pieces together in pairs, right sides facing, and stitch their side edges and bottom edges (use pattern piece for pocket flap as template for stitching). Trim seam allowances across

corners, press seams open with point of iron and turn flaps right side out. Press flaps flat and topstitch edges. Stitch buttonholes on flaps as marked on pattern. Stitch flaps above front pockets, right sides together. Fold flaps down right side out and stitch them in place along top edge using presser-foot edge as guide.

Cuff plackets: Construct cuff plackets following illustrated instructions on p. 47. >>>

Joining: Stitch front and back panels to shoulder yoke, right sides together. Fold seam allowances toward yoke and topstitch seams. Stitch sleeves to armholes, right sides together. Fold seam allowances toward body of garment and topstitch seams. Stitch sleeve underarm seams and side seams. Press folds in the middle of button bands. Pin and stitch button bands to front panels, with right side of non-interfaced edge of button band facing wrong side of front panel. Turn seam allowances on interfaced edges of button

bands to wrong side, pin edges to garment's front edges and stitch them in place close to edge (top and bottom edges of button bands are left open). At the same time, topstitch outer edge of each button band close to edge.

Collar: Turn and press seam allowance on bottom edge of outside collar piece to wrong side. Pin and stitch collar pieces together, right sides facing. Trim seam allowances along curved edges and press seam open with point of iron. Pin and stitch inside collar to garment's neckline,

with right side of collar piece facing wrong side of neck edge. Pin bottom edge of outside collar piece to neckline and stitch it in place close to edge. Topstitch around collar at the same time.

Sleeve cuffs: Pin sleeve cuff pieces together in pairs, right sides facing, and stitch their bottom and side edges. Trim seam allowances along curves and press seams open. Pin and stitch inside edge of cuff (= non-interfaced half) to sleeve edge, with right side of cuff facing wrong side of sleeve. Turn seam allowance on outside

edge of cuff to wrong side and stitch edge to right side of sleeve close to edge. Topstitch around cuff at the same time.

Finishing: Stitch narrow hem at garment's bottom edge. Stitch buttonholes and sew buttons on sleeve cuffs and collar as marked on pattern. Stitch buttonholes on button band, placing topmost buttonhole 4 cm down from neckline seam and the rest at regular 6-8 cm intervals. Sew buttons on button band and pockets.

29. Let It Be party T-shirt

86-92-98-104-110-116-122-128 cm

Pages 14, 19, 48-49



MATERIALS

- 45-45-45-50-50-55-55-60 cm single jersey (CO/EL), stretch/recovery 30%
- 5 cm ribbing
- 20...30 cm stay tape, Vlieseline® Formband

For "Party Shirt" print & appliqué:

- piece of dark-colored printed cotton fabric for necktie
- black and white fabric paint, Gütermann

You'll find a list of other materials for the print in the general instructions on p. 47.

CUTTING

Cut garment pieces from knit as indicated on list of pattern pieces. Do not add seam allowances to neckline. Cut 4.5 cm wide binding strip from ribbing for finishing neckline. If you use a binder attachment on your coverstitch machine to attach the binding, cut the binding strip in the width that fits the binder.

Cut necktie and knot pieces from cotton fabric with 5 mm seam allowances.

"PARTY SHIRT" PRINT & APPLIQUÉ:

Place motif on front panel so that knot shape lies 3 cm down from neck edge on center-front line. Print black letters on front panel and white letters on necktie piece, following general instructions on p. 47.

Make cardboard templates using pattern pieces for necktie and knot. Sew rows of ease-stitching along outer edges of seam allowances on necktie and knot shapes cut from fabric. Turn and press seam allowances on edges of shapes to wrong side; place templates on wrong side of shapes and pull up bobbin thread of ease-

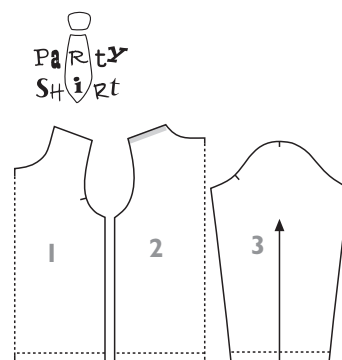
stitching so that seam allowance is turned over edge of template. Pin shapes to front panel and stitch them in place close to edge with straight stitch.

SEWING

Construction techniques: Stitch seams with serger or with overedge stretch stitch on regular sewing machine. Stitch sleeve-edge hems and bottom hem with serger coverstitch or with twin needle on regular sewing machine. See general instructions for finishing edges with binding on p. 46.

Stabilizing: Cut pieces of stay tape for shoulder edges on back panel (measure required length on pattern piece and add seam allowances). Fuse tapes to wrong side of shoulder seam allowances.

Joining: Stitch left shoulder seam. Finish neckline with binding. Stitch right shoulder seam and stitch seam allowances flat across neckline binding. Stitch sleeve-edge hems as marked on pattern. Stitch sleeves to armholes. Stitch sleeve underarm seams and side seams. Stitch bottom hem as marked on pattern.



PATTERN PIECES

	cut
1 front	1
2 back	1
3 sleeve	2
necktie and knot	

PATTERN SHEET E blue

30. Sgt Pepper's sweater-knit jacket

98-104-110-116-122-128-134-140 cm

Pages 18-19



MATERIALS

- 75-80-85-90-95-95-110-115 cm black and 15 cm pale-grey stretchy sweater knit (CO/EL), stretch/recovery 30%
- 40...60 cm interfacing, Vlieseline H 180
- 5 cm double-sided fusible web, Vlieseline® Vliesofix
- 14 (98-116 cm) or 16 (122-140 cm) metal buttons, ø 16 mm
- fabric patch
- pale-grey topstitching thread, Epic n:o 80

SEWING

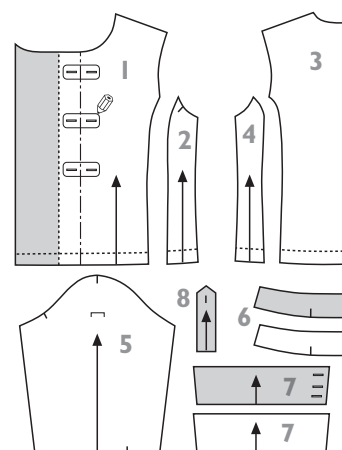
Construction techniques: Stitch seams with straight stitch and finish them with serger or zigzag stitch. Sew topstitching with topstitching thread using presser-foot edge as guide unless otherwise instructed.

Stabilizing: Cut interfacings for areas shaded in grey on small-scale patterns

PATTERN PIECES

	cut
1 front	2
2 side front panel	2
3 back	1
4 side back panel	2
5 sleeve	2
6 collar	1+1
7 sleeve cuff	2+2
8 epaulette	2+2
button & buttonhole trim	3 or 4

PATTERN SHEET E black



and fuse them in place (note that interfacing is only applied to outside collar, outside sleeve-cuff and outside epaulette pieces).

Epaulettes: Pin epaulette pieces together in pairs, right sides facing, and stitch their long edges and pointed ends. Trim seam allowances across corners and turn epaulettes right side out. Press epaulettes

flat and topstitch their edges. Stitch mock buttonholes (i.e. rectangles stitched with straight stitch) at ends of epaulettes as marked on pattern. Pin and machine-baste epaulettes at their open ends to sleeve caps, with black side of epaulette facing right side of sleeve and aligning midpoint mark on epaulette with midpoint mark on sleeve.

CUTTING

Cut inside collar, inside sleeve cuff and inside epaulette pieces from pale-grey knit and other garment pieces from black knit as indicated on list of pattern pieces.

Joining: Pin and stitch side front panels to front panels, right sides together. Fold seam allowances toward front panels and topstitch seams. Pin and stitch side back panels to back panel, fold seam allowances toward back panel and topstitch seams. Stitch fabric patch to right sleeve as marked on pattern. Stitch shoulder seams. Stitch sleeves to armholes. Fold seam allowances toward body of garment and topstitch seams. Stitch sleeve underarm seams and side seams. Finish raw edges of front facings as well as raw bottom-hem edge.

Collar: Pin collar pieces together, right sides facing, and stitch their top and center-front edges together. Trim seam allowances across corners and press seams open. Turn collar right side out and machine-baste its open edges together. Pin

and stitch collar to garment's neckline, right sides together and aligning front edges of collar with center-front marks on garment. Fold front facings to right side of front panel as marked on pattern and stitch their neckline and bottom-hem edges to front panel. Finish neckline seam.

Turn garment's front edges right side out and press them thoroughly. Topstitch front edges and edges of collar with continuous line of stitching that starts at bottom hem and continues along neck edge and outer edge of collar and finishes at bottom hem on the other side (see design sketch). Fold up and pin bottom hem and stitch it with two parallel rows of stitching using black thread. Attach epaulettes to shoulder seams with a few hand stitches sewn at mock buttonholes and sew buttons over buttonholes.

Sleeve cuffs: Pin sleeve cuff pieces together in pairs, right sides facing, and stitch their bottom and side edges. Trim seam allowances across corners and press seams open. Turn cuffs right side out and machine-baste their open edges together. Stitch mock buttonholes (i.e. rectangles stitched with straight stitch) at ends of cuffs as marked on pattern. Overlap ends of each cuff by 2 cm, with buttonhole end on top, and pin ends together. Attach ends of cuffs together by sewing buttons over mock buttonholes through all layers. Turn garment inside out and place cuffs inside sleeves, right sides together. Pin and stitch cuffs to sleeve edges, placing buttoned edge of cuff on back of sleeve 4 cm away from underarm seam.

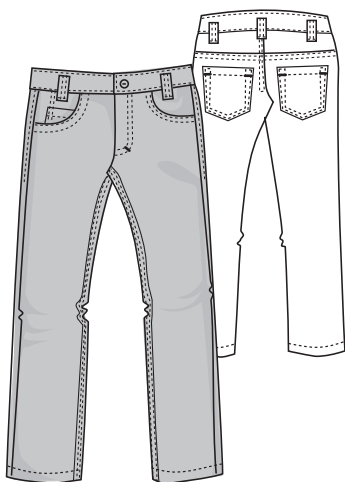
Button & buttonhole trims: Trace pattern for trim on paper backing of

double-sided fusible web. Iron fusible web onto wrong side of pale-grey sweater knit and cut trims out along their outlines. Cut three trims for sizes 98-116 cm and four trims for sizes 122-140 cm. Remove paper backing from fusible web and fuse trims to right side of left front panel as marked on pattern. Stitch trims in place close to edge, leaving their edges raw. Stitch buttonholes (i.e. rectangles stitched with straight stitch) on trims as marked on pattern. Cut buttonholes closest to front edge open carefully and sew buttons at corresponding places on right front panel. Sew buttons on trims, placing them over mock buttonholes (i.e. uncut buttonholes).

31. Paperback Writer corduroy or tweed pants

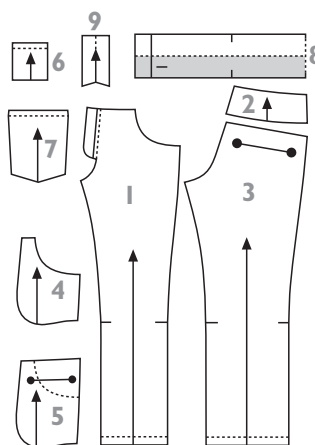
92-98-104-110-116-122-128-134-140 cm

Pages 12-13, 18-19, 48, 64-65



MATERIALS

- 65-70-75-80-80-85-90-100-110 cm stretchy crinkled corduroy (PES/PA/EL), width 125 cm (**design A**)
- 65-65-65-70-80-85-90-95-100 cm stretchy salt & pepper tweed (VV/SE/PA/PES/EL), width 145 cm (**design B**)
- 20...25 cm lightweight cotton fabric for pocket facings
- 4 cm interfacing, Vlieseline H 180
- zipper, length 7-8-8-9-9-10-10-11-11 cm
- metal button, ø 15 mm
- topstitching thread, Epic n:o 80



PATTERN PIECES

PATTERN PIECES	cut
1 pants front	2
2 back yoke	2
3 pants back	2
4 pocket piece	2
5 pocket facing	2
6 coin pocket	1
7 back pocket	2
8 waistband	1
9 fly shield	1

PATTERN SHEET E green

CUTTING

Cut pocket facings from lightweight cotton fabric and other garment pieces from corduroy or tweed as indicated on list of pattern pieces. Cut also 3.5 cm x 35 cm strip from fashion fabric for belt loops.

SEWING

Construction techniques: Stitch seams with straight stitch and finish them with serger or zigzag stitch. Topstitch pocket openings, side seams and yoke seams with two parallel rows of stitching spaced 10 mm apart and topstitch other seams and edges with two rows of stitching spaced 7 mm apart (i.e. regular double-topstitching), unless otherwise instructed.

Stabilizing: Cut interfacing for waistband and fuse it in place.

Coin pocket: Stitch hem at opening edge of pocket. Turn seam allowances on other pocket edges to wrong side and topstitch pocket to right pocket piece as marked on pattern.

Front-hip pockets: Stitch pocket facing to pocket opening on pants front panel, right sides together. Understitch seam allowances to pocket facing. Turn pocket facing to wrong side of pants panel and topstitch pocket opening. Pin pocket piece to pocket facing, right sides together, and stitch bottom of pocket. Machine-baste edges of pocket to waist and side seam allowances.

Joining: Stitch hems at opening edges of back pockets. Pin and topstitch pockets to pants back panels as marked on pattern. Stitch back yokes to pants back panels, fold seam allowances toward back panels

and topstitch seams. Stitch leg inseams, fold seam allowances toward pants back panels and topstitch seams. Finish raw edges of crotch seam allowances. Stitch crotch seam and apply zipper to placket, following illustrated instructions for fly-front zipper on p. 47. Stitch bar-tacks on front fly as shown in design sketch.

Stitch pants side seams, fold seam allowances toward pants back panels and edge-stitch seams from waist down to bottom edge of front-hip pocket. Fold up, pin and stitch hems at bottom edges of legs as marked on pattern.

Belt loops: Finish one raw long edge of belt loop strip, fold strip in three and double-topstitch in the middle of strip. Cut strip into five pieces. Pin and stitch one end of each belt loop to pants waist as shown in design sketch, right sides to-

gether.

Waistline: Fold waistband in half, right sides together, and stitch its ends. Pin and stitch bottom edge of waistband facing to pants waist, with its right side against wrong side of waist edge. Turn waistband right side out, turn seam allowance on its free edge under and stitch turned-under edge to right side of pants waist. Topstitch around waistband close to edge. Stitch free ends of belt loops to top edge of waistband.

Finishing: Stitch buttonhole and sew button on waistband as marked on pattern.

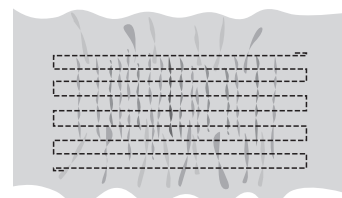
ELASTICIZED SHIRRING

- Wind sewing machine bobbin with elastic thread by hand, stretching thread slightly.
- Stitch with regular straight stitch, adjusting stitch length to 2.5...3.5 and decreasing needle thread tension slightly.
- Sew stitching from right side of garment,

placing rows of shirring 10...20 mm apart.

- Pull fabric taut as you sew to make sure that rows of shirring will be straight and parallel.
- To finish off, secure thread ends carefully.

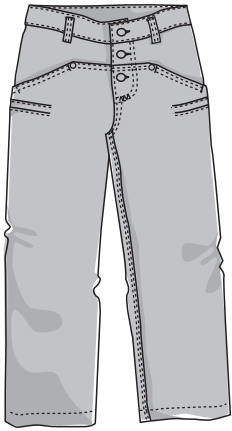
- Shirring will not show straight after the first line of stitching and shirred area is gathered to its final width only after steaming it lightly with an iron.
- Experiment with shirring on a scrap of fabric before starting!



32. Goofy button-fly jeans

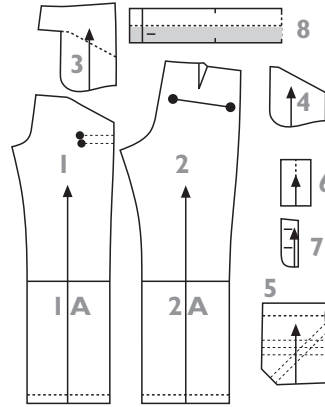
128-134-140-146-152-158-164-170 cm

Pages 10-11



MATERIALS

- 100-105-115-120-125-130-135-145 cm stretchy denim (CO/EL), width 135 cm
- 20 cm lightweight cotton fabric for pocket facings
- 5 cm interfacing, Vlieseline H 180
- 6 jeans studs, ø 8 mm, Prym 403 101
- 3 jeans buttons, ø 14 mm, Prym 622 240
- contrast-color topstitching thread, Epic no. 80



PATTERN PIECES

	cut
1+1A pants front	2
2+2A pants back	2
3 front yoke + pocket piece	2
4 pocket facing	2
5 back pocket	2
6 fly shield (R)	1
7 fly facing (L)	1
8 waistband	1

PATTERN SHEET D orange

CUTTING

Join pattern pieces 1+1A for pants front and pattern pieces 2+2A for pants back before cutting. Cut pocket facings from lightweight cotton fabric and other garment pieces from denim as indicated on list of pattern pieces. When cutting out fly shield and fly facing, lay pattern pieces on right side of fabric (R = right pants front and L = left pants front). Cut also 3.5 cm x 35 cm strip from denim for belt loops.

SEWING

Construction techniques: Stitch seams with straight stitch and finish them with serger or zigzag stitch. Double-topstitch seams and edges with topstitching thread unless otherwise instructed.

Preparation: Cut interfacing for waistband and fuse it in place. Pin and stitch darts on pants back panels from right side of panel as marked on pattern. Fold darts toward center-back seam and topstitch them to pants panels, stitching close to dart fold.

Decorative tucks on pants front panels: Fold pants front panels wrong sides together along tuck marks and edgestitch along each tuck fold (backstitch at both ends of tucks).

Back pockets: Fold pocket piece wrong sides together along each horizontal tuck mark and edgestitch along tuck folds. Form three horizontal tucks on each pocket. Fold pocket piece wrong sides together along each diagonal tuck mark and edgestitch along tuck folds. Form two diagonal tucks on each pocket.

Finish raw edges of back pockets. Press hems at opening edges of pockets as marked on pattern (hems are not stitched). Turn and press seam allowances on other edges of pockets to wrong side. Pin and topstitch pockets to pants back panels as marked on pattern. Attach jeans studs at top corners of pockets.

Front-hip pockets and front yoke: Pin and stitch pocket facing to pocket opening on pants front panel. Understitch seam allowances to pocket facing. Turn pocket facing to wrong side of pants panel

and topstitch pocket opening. Pin front yoke + pocket piece to top edge of pants front panel, right sides together, and stitch horizontal seam as far as corner of pocket opening. Pin and stitch bottom edges of pocket pieces together, right sides facing. Lay pocket and front yoke in position and topstitch horizontal panel seam. Machine-baste side edges of pockets to pants side seam allowances. Stitch bar-tacks (= reinforcing stitching sewn with narrow, short zigzag) at both ends of pocket openings. Attach jeans studs at both ends of horizontal panel seam.

Joining: Stitch leg inseams, fold seam allowances toward pants back panels and topstitch seams. Fold fly shield piece in half, wrong sides together, and serge or zigzag its open long and bottom edges together. Topstitch folded edge of fly shield. Pin and stitch fly shield to center-front seamline on right pants front panel, right sides together. Finish raw edges of crotch seam allowances. Fold seam allowances along fly shield toward pants panel and topstitch seam along shield close to

seamline.

Finish raw curved edge of fly facing. Pin and stitch fly facing to center-front seamline on left pants front panel, right sides together. Understitch seam allowances to fly facing. Pin and stitch crotch seam from back waist edge to bottom of front fly. Turn fly facing to wrong side and topstitch its long edge to pants front panel. Topstitch bottom edge of fly facing to fly shield through all layers. Stitch bar-tack at bottom of front fly using wide three-step zigzag stitch. Fold crotch seam allowances toward left pants front and back panels and topstitch crotch seam.

Stitch side seams. Fold seam allowances toward pants back panels and edgestitch side seams from waist edge down to bottom edge of front pocket. Construct belt loops and finish waistline following instructions for design no. 31.

Finishing: Stitch buttonhole on waistband and lower buttonhole on fly shield as marked on pattern. Stitch another buttonhole on fly shield between the previous buttonholes. Attach jeans buttons.

33. Mickey button-front T-shirt

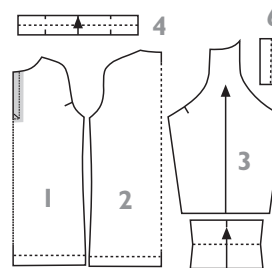
128-134-140-146-152-158-164-170 cm

Pages 10-11



MATERIALS

- 65-65-75-80-85-100-110-120 cm printed cotton single jersey (CO/EL) or interlock knit (CO), stretch/recovery 30%
- 20 cm ribbing (CO/EL)
- piece of cotton fabric for placket bands
- piece of interfacing, Vlieseline H 180
- 3 metal buttons, ø 14 mm



PATTERN PIECES

	cut
1 front	1
2 back	1
3 sleeve	2
4 neckline binding	1
5 sleeve cuff	2
6 placket band	2

PATTERN SHEET F red

CUTTING

Cut neckline binding and sleeve cuffs from ribbing and placket bands from cotton fabric. Cut other garment pieces from printed knit as indicated on list of pattern pieces.

SEWING

Construction techniques: Stitch seams with serger unless otherwise instructed. Sew topstitching with two-needle serger coverstitch or with twin needle on regular sewing machine.

Joining: Fold sleeve cuffs in half, wrong sides together, and stitch them to sleeve edges, right sides together. Fold seam

allowances toward sleeves and topstitch seams. Stitch sleeves to front and back panels with straight stitch and finish seams with serger. Fold seam allowances toward sleeves and topstitch seams using presser-foot edge as guide.

Neckline and front placket: Cut interfacings for areas on placket bands shaded in grey on small-scale pattern piece and fuse them in place. Press folds in the middle of placket bands. Fuse piece of interfacing to wrong side of placket opening on front panel. Sew reinforcing stitching around placket opening as marked on pattern and slash placket opening as shown in illustration, clipping corners

close to stitching.

Fold neckline binding in half, wrong sides together. Pin and stitch binding to neckline with straight stitch, right sides together. Finish neckline seam allowances. Fold seam allowances toward body of garment and topstitch neckline seam using presser-foot edge as guide.

Fold placket bands in half, right sides together, and stitch their top edges. Turn placket bands right side out. Pin and stitch non-interfaced edge of placket band to wrong side of placket opening. Turn seam allowance on interfaced edge of placket band to wrong side and stitch turned-under edge to placket close to edge,

leaving bottom edge of band open. Repeat for the other placket band. Lay placket bands one on the other (with left placket band on the outside) and machine-baste their bottom-edge seam allowances together.

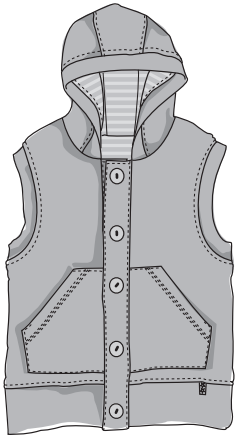
Stitch triangle at bottom of placket opening to placket bands. Finish seam allowances together. Stitch buttonholes and sew buttons on placket bands as marked on pattern.

Finishing: Stitch sleeve underarm seams and side seams. Stitch underarm seam allowances flat for approx. 2 cm at sleeve edges. Fold up, press and stitch bottom hem as marked on pattern.

34. Donald hooded sweater-knit vest

128-134-140-146-152-158-164-170 cm

Pages 10-11



MATERIALS

- 85-85-85-90-95-95-115-120 cm stretchy sweater knit (CO/EL), stretch/recovery 30%
- 50-55-55-60-60-65-65-75cm striped cotton single jersey (CO/EL), stretch/recovery 30%
- 15 cm interfacing, Vlieseline H 180
- 220...270 cm stay tape, Vlieseline® Formband
- 5-6 buttons, ø 22 mm
- piece of ribbon trim

CUTTING

Cut shell pieces from sweater knit and lining pieces from striped single jersey as indicated on list of pattern pieces.

SEWING

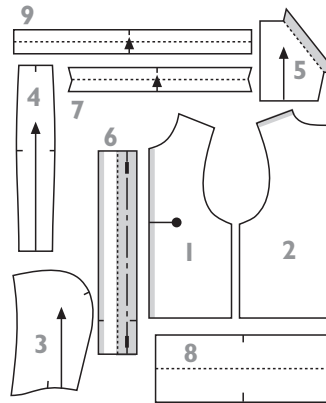
Construction techniques: Stitch seams with straight stitch. No seam finish is necessary as the garment is fully lined. Sew topstitching using presser-foot edge as guide unless otherwise instructed.

Stabilizing: Cut interfacings for button bands and opening edges of pockets and fuse them in place (see areas shaded in grey on small scale patterns). Cut pieces of stay tape for shoulder edges on both shell and lining back panels (measure required length of tape on pattern piece and add seam allowances). Fuse tapes to wrong side of shoulder seam allowances. Cut pieces of stay tape for seam allowances on inside edges of button bands and fuse them in place.

Pockets: Fold and press hems at opening

edges of pockets and stitch them with serger coverstitch or with honeycomb stitch on regular sewing machine. Turn seam allowances on top, side and bottom edges of pockets to wrong side. Pin pockets to shell front panels as marked on pattern and stitch them in place close to edge. Machine-baste front edges of pockets to seam allowances on front edges of front panels.

Hood: Stitch shell-hood side panels to center panel, right sides together. Fold seam allowances toward center panel and topstitch seams. Stitch lining hood panels together in the same way, without topstitching. Fold hood face-edge binding in half, wrong sides together. Stitch binding to face edge of shell hood, right sides together, stretching binding slightly as you sew. Place hood sections within one another, right sides together, and stitch their face edges together. Turn hood right side out and topstitch its face-edge seam. Machine-baste neckline edges of hood sections together at the same time.



PATTERN PIECES

cut

Shell Lining

1 front	2	2
2 back	1	1
3 hood side panel	2	2
4 hood center panel	1	1
5 pocket	2	-
6 button band	2	-
7 armhole binding	2	-
8 hem band	1	-
9 hood face-edge binding	1	-

PATTERN SHEET F blue

Joining: Stitch shoulder seams and side seams of both shell and lining. Stitch ends of each armhole binding together to form circles. Fold armhole bindings wrong sides together and stitch them to armhole edges of shell, right sides together. Fold hem band wrong sides together and stitch it to bottom-hem edge of shell, right sides together. Stitch hood to shell's neckline, right sides together, placing its face edge seam-allowance away from front edges of front panels.

Pin and stitch left armholes of shell and lining together, right sides facing and with armhole binding in between. Push lining through armhole to wrong side and stitch right armholes of shell and lining together, with binding in between: stitch front and back armhole edges separately, starting stitching from shoulder. Pin and stitch necklines of shell and lining together, right sides facing and with hood in between: start stitching at center-back mark and stitch each half of neck edge separately. Pin and stitch bottom-hem edge of lining

to bottom-hem edge of shell, right sides together and with hem band in between. Turn garment right side out and topstitch armhole and bottom-hem seams.

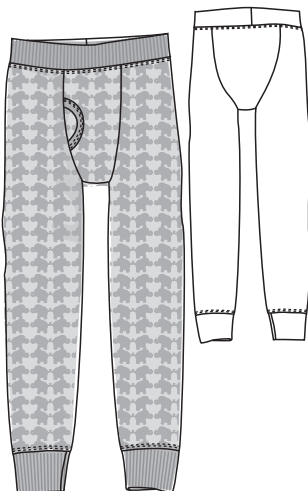
Machine-baste front edges of shell and lining together along seam allowances. Pin and stitch inside edge of button band to garment's front edge on lining side, right sides together. Fold button band right sides together and stitch its top and bottom edges. Turn button band right side out. Turn seam allowance on outside edge of button band to wrong side, and pin and stitch turned-under edge to front panel close to edge. Topstitch top, bottom and outer edges of button band at the same time. Repeat for the other button band.

Finishing: Stitch ribbon trim at its both ends to hem band as shown in design sketch. Stitch buttonholes and sew buttons on button bands, placing them on center-front line. Place topmost and lowest buttonhole as marked on pattern and the rest at regular intervals between these.

35. Game Over long johns

128-134-140-146-152-158-164-170 cm

Pages 6-7

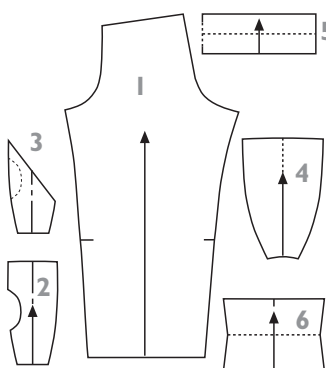


MATERIALS

- 70-75-80-85-90-90-95-100 cm cotton single jersey (CO/EL) or interlock knit (CO), stretch/recovery 30%
- 10 cm dark-blue and 20 cm turquoise ribbing (CO/EL)
- 55...70 cm elastic, width 30 mm

CUTTING

Cut waistband from dark-blue and bottom-leg cuffs from turquoise ribbing and other garment pieces from single jersey



PATTERN PIECES

cut

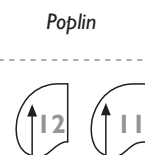
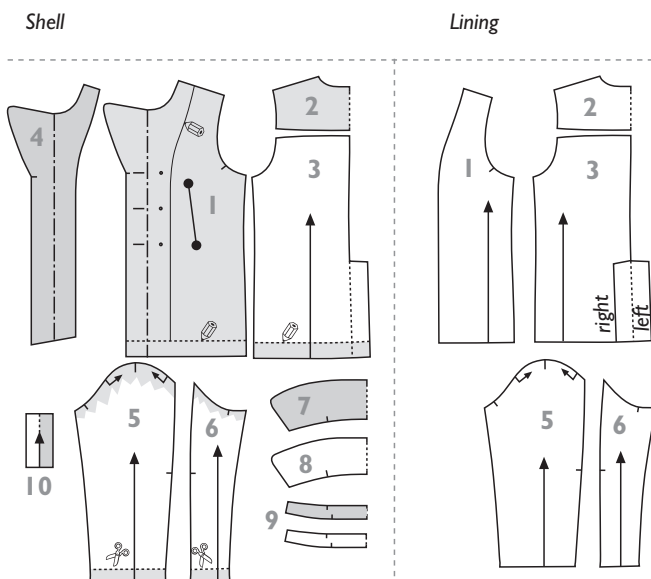
1 pants panel	2
2 outer fly panel	1
3 inner fly panel	1
4 back panel	1
5 waistband	1
6 bottom-leg cuff	2

PATTERN SHEET F black

SEWING

Follow instructions for design no. 14.

36. Charlie Brown double-breasted wool pea jacket 128-134-140-146-152-158-164-170 cm Pages 64-65



PATTERN PIECES	cut	
	Shell	Lining
1 front	2	2
2 shoulder yoke	1	1
3 back	1+1	1+1
4 front facing	2	-
5 upper sleeve	2	2
6 under sleeve	2	2
7 upper collar	1	-
8 under collar	1	-
9 collar stand	2	-
10 pocket welt	2	-
11 inner pocket piece	2	2
12 outer pocket piece	2	2

PATTERN SHEET E red

MATERIALS

- 125-135-150-150-155-165-170-175 cm lightly-felted wool fabric (VV/VVS/PA)
- 100-105-105-115-120-125-130-130 cm satin lining fabric (PES) poplin for pocket pieces (CO)
- 70...85 cm fusible nonwoven interfacing, Vlieseline H 180
- 110...130 cm fusible knit interfacing, Vlieseline G 785
- 6 metal shank buttons, ø 22-24 mm
- sew-on snap fastener, ø 12 mm
- small shoulder pads
- 2 cm strip of batting or wool fleece for sleeve heads
- topstitching thread, Epic no. 80

CUTTING

Shell: Cut pocket pieces from poplin and other garment pieces from wool fabric as indicated on list of pattern pieces. Note that on the finished garment, the right vent edge will be on the outside. Therefore the vent edges on the left and right back panels are cut differently (see pattern markings). Cut also 3 cm x 12 cm strip from poplin for hanging loop.

Lining: Trace pattern pieces for lining front and back panels from patterns for shell, observing markings on small-scale patterns. Front and back bottom hem as well as sleeve edges of lining are cut along pattern lines marking foldlines of shell. Cut lining pieces from satin lining fabric as indicated on list of pattern pieces, laying pattern pieces on right side of fabric.

SEWING

Construction techniques: Stitch seams with straight stitch. No seam finish is necessary as the garment is fully lined. Sew topstitching using presser-foot edge as guide unless otherwise instructed.

Stabilizing: Cut interfacings for areas shaded in grey on small-scale patterns and fuse them in place to wrong side of shell pieces. Use knit interfacing for front panels, shoulder yoke, sleeves and bottom hem allowances and nonwoven interfacing for other garment pieces. Interfacing is only applied to outer collar-stand piece.

Welt pockets: Construct welt pockets on shell front panels, following illustrated instructions on p. 46.

Collar: Pin under collar and upper collar together, right sides facing, and stitch their ends and outer edges together. Trim seam allowances across corners, press seams open carefully with point of iron and turn collar right side out. Topstitch outer edge of collar and machine-baste its open edges together. Pin and stitch collar between collar stand pieces, with interfaced collar stand piece + upper collar right sides together and non-interfaced collar stand piece + under collar right sides together. Trim seam allowances across corners and turn collar stand right side out. Topstitch front edges and joining seam on collar stand and machine-baste its open edges together.

Joining shell: Pin back panels together, right sides facing, and stitch center-back seam down to top end of vent. Fold seam allowances toward right back panel and topstitch seam. Pin and stitch shoulder yoke to back panel, right sides together. Fold seam allowances toward shoulder yoke and topstitch seam. Pin front and back panels together, right sides facing, and stitch shoulder seams. Fold seam allowances toward shoulder yoke and topstitch seams. Stitch side seams and press them open. Fold up and press bottom hem as marked on pattern.

Place right back-vent facing and bottom hem allowance right sides together and stitch seam to form bottom-hem corner. Trim seam allowances across corner and press seam open.

Pin upper sleeves and under sleeves together, right sides facing, and stitch back seams of sleeves. Fold seam allowances toward upper sleeves and topstitch seams. Stitch underarm seams of sleeves and

press them open. Sew rows of ease-stitching along sleeve caps and pull up bobbin threads of ease-stitching slightly. Shape sleeve caps by steaming. Fold up and press sleeve-edge hems as marked on pattern. Pin and stitch sleeves to armholes. Cut strips of batting for sleeve heads and stitch them to sleeve-cap seam allowances on sleeve side, placing them between marks for easing. Pin and stitch collar to shell's neckline, with right side of under collar facing right side of shell and aligning ends of collar with center-front marks.

Joining lining: Pin back panels together, right sides facing, and stitch center-back seam down to top end of vent. Pin and stitch shoulder yoke to back panel, right sides together. Pin and stitch front facings to lining front panels, right sides together. Understitch seam allowances to front facings close to seamline. Pin lining front and back panels together, right sides facing, and stitch shoulder seams and side seams, leaving 20 cm opening for turning in one side seam.

Stitch back seams and underarm seams of sleeves and press seams open. Sew rows of ease-stitching along sleeve caps and pull up bobbin threads of ease-stitching slightly. Pin and stitch sleeves to armholes.

Hanging loop: Fold hanging loop strip in half, wrong sides together, turn seam allowances on long edges in and stitch edges together. Machine-baste hanging loop to neckline of lining back panel.

Intermediate press: Press shell and lining thoroughly before continuing. Turn both shell and lining inside out.

Joining shell and lining: Pin and stitch bottom hem of lining to bottom hem of shell, right sides together, as follows: match bottom-front corners of front facings with bottom-front corners of shell and pin bottom edges of facings diagonally to hem allowance on shell, so that hem edges of shell and lining meet at each facing attachment seam and are aligned along the rest of bottom hem.

Pin and stitch right back-vent edge of lining to right back-vent edge of shell, right sides together (do not stitch top edge of

vent yet). Pin and stitch lining and shell together along left back-vent edge, right sides together, folding small pleat on lining at bottom-hem seam. Press seam on left back-vent edge open and topstitch vent edge close to edge. Clip lining seam allowances to stitching at corner at top edge of back vent. Sew top edge of lining back vent to top edge of shell back vent by hand. Pin vent in position stitch row of diagonal topstitching at top edge of vent through all layers from right side of garment.

Turn shell and lining inside out, with shell sleeves and lining sleeves hanging separately. Pin shell and lining together, right sides facing, and stitch their front edges and necklines together, with collar in between. Trim seam allowances across corners and clip them along curves at neckline. Bring sleeve edges of shell and lining end to end, line up edges and pin them together, right sides facing, and stitch (note that sleeve and sleeve lining are not placed within one another).

Attach shoulder pads to shoulder and armhole seam allowances on lining. Pin sleeve-edge hems and bottom hem in position and sew them by hand with catchstitches. Secure armhole seam allowances of shell and lining together at side seams with long French tacks.

Turn garment carefully right side out through opening in lining's side seam. Press garment's front edges. Topstitch front edges and front neckline seam on each side as far as shoulder seam.

Finishing: Stitch buttonholes on left front panel as marked on pattern. Sew buttons on both right and left front panel as marked on pattern (take care not to catch pocket in stitching). Sew one half of snap fastener to lining side of left front panel, placing it under topmost button, and the other half to right side of right front panel. Close opening for turning on lining.

37. Peppermint Patty velour dress

128-134-140-146-152-158-164-170 cm

Page 62



MATERIALS

- 130-140-150-155-200-205-210-220 cm velour knit (CO/PES)
- 5 cm viscose jersey (CV/EL)
- 85...105 cm clear elastic tape, width 8 mm, Framilon®
- elastic thread (suitable for bobbin thread)

CUTTING

Cut garment pieces from velour knit as indicated on list of pattern pieces. Cut 3 cm x 108-110-112-114-116-118-120-122 cm strip from viscose jersey for neckline frill and 3 cm x 36 cm strip for front frill.

SEWING

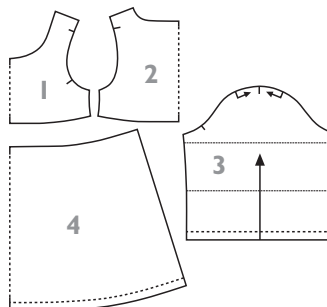
Construction techniques: Stitch seams with straight stitch and finish them with serger or zigzag stitch. Stitch bottom hem, sleeve-edge hems and hem at neckline with serger coverstitch or with twin needle on regular sewing machine. See general instructions for elasticized shirring

on p. 40.

Frills: Finish both long edges of frill strips with serger rolled hem, trimming frill strips to width of 2 cm. If you finish the edges of the frills with a zigzag stitch, trim the frills to their final width first.

Sew two rows of gathering stitches in the middle of front frill and gather frill to a length of 20 cm. Pin and stitch frill to right side of bodice front panel, placing it on both sides of center-front line as shown in design sketch and stitching between rows of gathering stitches. Remove gathering stitches.

Mark neckline frill into quarters and sew two rows of gathering stitches in the



PATTERN PIECES

	cut
1 bodice front	1
2 bodice back	1
3 sleeve	2
4 skirt panel	2

PATTERN SHEET F orange

middle of frill. Stitch shoulder seams. Finish raw edge of neckline. Pin and stitch 1 cm wide hem at neckline. Mark neckline into quarters. Gather frill to fit neckline and stitch its ends together to form circle. Pin and stitch frill to right side of neckline, aligning its edge with neckline edge. Remove gathering stitches.

Sleeves: Make elasticized shirring on sleeves as marked on pattern (pattern mark indicates upper row of shirring; stitch lower row 1 cm away from it). Experiment with shirring on a scrap of fabric before starting. Reduce bobbin thread tension if necessary. Stitch sleeves to armholes.

Skirt panels: Cut two pieces from clear elastic tape for gathering skirt panels. (measure required lengths on waist edges of bodice front and back panels and add seam allowances). Mark clear elastic tapes and top edges of skirt panels into quarters. Stitch clear elastic tapes along their both edges to right side of seam allowances on top edges of skirt panels, aligning quarter marks and stretching tape as you sew. Pin skirt panels to bodice front and back panels, right sides together, and stitch waist seams (clear elastic tapes will be concealed between seam allowances).

Stitch sleeve underarm seams and side seams. Fold up, pin and stitch bottom hem and sleeve-edge hems.

38. Violet Grey wool coat

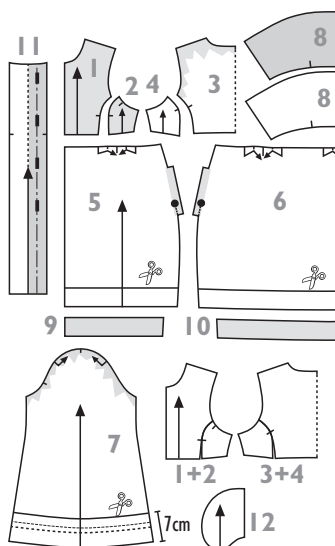
128-134-140-146-152-158-164-170 cm

Pages 62-63



MATERIALS

- 160-165-175-185-195-210-215-225 cm lightly-felted wool fabric (VV/PES)
- 120-135-140-145-160-165-170-180 cm satin lining fabric (PES)
- 65...90 cm fusible nonwoven interfacing, Vlieseline H 180
- 45...55 cm fusible knit interfacing, Vlieseline G 785
- 4 plastic shank buttons, ø 26 mm
- small shoulder pads
- 2 cm strip of batting or wool fleece for sleeve heads
- 55-57-59-61-63-65-67-69 cm elastic, width 10 mm
- topstitching thread, Epic n:o 80



PATTERN PIECES

	cut
Shell	
1 bodice front	2
2 side bodice-front panel	2
3 bodice back	1
4 side bodice-back panel	2
5 skirt front	2
6 skirt back	1
7 sleeve	2
8 collar	1+1
9 front bottom-hem facing	2
10 back bottom-hem facing	1
11 button band	2

Lining

1+2 bodice front	2
3+4 bodice back	1
5 skirt front	2
6 skirt back	1
7 sleeve	2
12 pocket piece	2+2

PATTERN SHEET F green

CUTTING

Shell: Cut shell pieces from wool fabric as indicated on list of pattern pieces. Cut under collar with slightly narrower seam allowances than upper collar.

Lining: Join pattern pieces for bodice front and side bodice-front panel as well as for bodice back and side bodice-back panel into single pattern pieces. Cut skirt front and back panels 5 cm and sleeves 7 cm shorter than shell (see small-scale patterns). Fold away extensions at pocket openings on pattern pieces for skirt panels when cutting out lining. Cut lining pieces from satin lining fabric as indicated on

list of pattern pieces. Cut also 3 cm x 12 cm strip for hanging loop.

SEWING

Construction techniques: Stitch seams with straight stitch. No seam finish is necessary as the garment is fully lined. Sew topstitching using presser-foot edge as guide unless otherwise instructed.

Stabilizing: Cut interfacings for areas shaded in grey on small-scale patterns and fuse them in place to wrong side of shell pieces. Use knit interfacing for bodice front and back panels, sleeves and bottom-hem facings and nonwoven interfacing

for other garment pieces. Interfacing is only applied to outer collar piece.

Collar: Pin collar pieces together, right sides facing, and stitch their ends and outer edges together. Trim seam allowances across corners, press seams open carefully with point of iron and turn collar right side out. Topstitch outer edge of collar and machine-baste its open edges together.

Joining shell: Pin and stitch side bodice-front panels to bodice front panels, right sides together. Fold seam allowances toward bodice front panels and topstitch seams. Stitch side bodice-back panels to

bodice back panel and topstitch seams. Stitch shoulder seams and side seams and press seams open.

Cut elastic in half. Pin pieces of elastic to wrong side of sleeve edges as marked on pattern and stitch them in place along both edges, stretching them as you sew. Stitch underarm seams of sleeves. Sew rows of ease-stitching along sleeve caps and pull up bobbin threads of ease-stitching slightly. Shape sleeve caps by steaming. Pin and stitch sleeves to armholes. Cut strips of batting for sleeve heads and stitch them to sleeve-cap seam allowances on sleeve side, placing them between marks for easing. >>>

Pin and machine-baste inverted pleats at waist edges of skirt panels as marked on pattern. Stitch pocket pieces to side edges of skirt panels, right sides together. Stitch side seams from waist edge down to top end of pocket opening and from bottom end of pocket opening down to bottom-hem edge, observing pattern markings. Press seams open. Clip seam allowances to stitching at both ends of pocket openings to make pockets turn toward skirt front panels. Stitch edges of pocket pieces together. Stitch short horizontal rows of stitching at both ends of pocket openings from right side of skirt section.

Pin and stitch skirt to bodice, right sides together. Fold seam allowances toward bodice and topstitch seam. Sew gathering stitches along bottom-hem edges of skirt front and back panels and gather edges to fit front and back bottom-hem facings. Pin and stitch interfaced edges of button bands to garment's front edges, right sides together. Fold seam allowances toward

button bands and topstitch seams. Press folds on button bands as marked on pattern. Pin and stitch collar to shell's neckline, with right side of under collar facing right side of shell and aligning ends of collar with center-front marks on button bands.

Joining lining: Stitch shoulder seams and side seams on bodice and press seams open. Stitch underarm seams of sleeves. Sew rows of ease-stitching along sleeve caps and pull up bobbin threads of ease-stitching slightly. Pin and stitch sleeves to armholes.

Pin and machine-baste inverted pleats at waist edges of skirt panels as marked on pattern. Sew gathering stitches along bottom-hem edges of skirt panels and gather edges to fit front and back bottom-hem facings. Stitch bottom-hem facings to lining skirt front and back panels, right sides together. Stitch side seams on skirt, leaving 20 cm opening for turning in one seam. Press side seams open. Pin and stitch skirt

to bodice, right sides together.

Hanging loop: Fold hanging loop strip in half, wrong sides together; turn seam allowances on long edges in and stitch edges together. Machine-baste hanging loop to neckline of lining back panel.

Joining shell and lining: Press shell and lining thoroughly before continuing. Pin and stitch inside edges of button bands to front edges of lining, right sides together. Fold seam allowances toward lining and topstitch seams.

Turn shell and lining inside out, with shell sleeves and lining sleeves hanging separately on garment's wrong side. Pin and stitch necklines of shell and lining together, right sides facing and with collar in between. Trim seam allowances across corners and clip them along curves at neckline. Bring sleeve edges of shell and lining end to end, line up edges and pin them together, right sides facing, and stitch (note that sleeve and sleeve lining are not placed within one another). Pin and stitch

bottom edges of bottom-hem facings to bottom-hem edge of shell, right sides together. Attach shoulder pads to shoulder and armhole seam allowances on lining. Secure armhole seam allowances of shell and lining together at side seams with long French tacks.

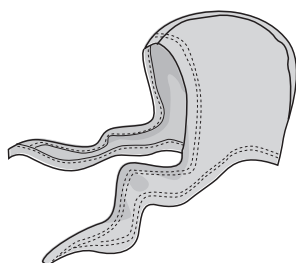
Turn garment carefully right side out through opening in lining's side seam. Understitch bottom-hem seam allowances to bottom-hem facings, working through opening for turning on lining. Topstitch front edges and front neckline seam on each side as far as shoulder seam.

Finishing: Stitch buttonholes on right button band as marked on pattern. Sew buttons on left button band as marked on pattern.

39. Marcie velour scarf

48-50-52-54 cm

Pages 60-61



MATERIALS

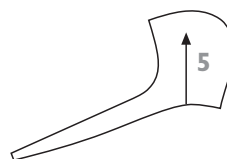
- 40-40-45-45 cm velour knit (CO/PES)

CUTTING

Cut scarf panels from velour knit.

SEWING

Pin scarf panels together, right sides facing, and stitch top seam with serger. Fold and press 15 mm seam allowances to wrong side on edges of scarf and stitch edges with serger coverstitch or with twin needle on regular sewing machine.



PATTERN PIECES

5 scarf panel

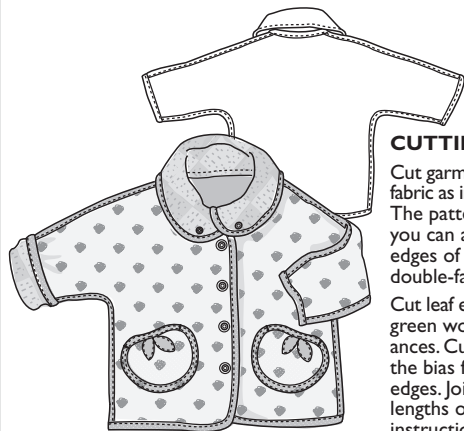
cut 2

PATTERN SHEET A red

40. Frieda reversible jacket

86-92-98-104-110-116-122 cm

Pages 60-61



CUTTING

Cut garment pieces 1-4 from double-face fabric as indicated on list of pattern pieces. The pattern has been designed so that you can add 8 mm seam allowances to edges of all garment pieces cut from double-face fabric.

Cut leaf embellishments for pockets from green wool fabric without seam allowances. Cut 36 mm wide binding strips on the bias from cotton fabric for finishing edges. Join strips to obtain required lengths of bias binding. See illustrated instructions for cutting and joining bias binding strips on p. 29.

MATERIALS

- 65-70-80-95-100-105-110 cm needle-felted double-face fabric, with lightweight outerwear fabric (PES) on one side and felted wool knit (WV) on the other; width 140 cm
- piece of green felted wool fabric for embellishments
- 35-35-40-40-45-50 cm cotton fabric for bias binding strips
- 6-7 prong ring snap fasteners, ø 10 mm, Prym Jersey (identical rings on both halves)
- piece of double-sided fusible web, Vlieseline® Vliesofix

SEWING

Construction techniques: The seams are stitched with a straight stitch and finished with bias binding, so that the jacket can be worn either side out. Stitch side seams, shoulder seams and neckline seam so that seam allowances are on outerwear-fabric side.

Pockets: Sew decorative topstitching on edges of leaf embellishments using green thread. Machine-baste embellishments to pocket pieces as marked on pattern. Finish edges of pockets with bias binding (illustration 1). Pin pockets to front panels as marked on pattern and stitch them in place close to edge.

Joining: Stitch shoulder seams. Finish shoulder seams flat with bias binding (illustration 2).

Stitch collar to neckline, fold seam allowances toward collar and finish seam flat with bias binding (illustration 2).

Stitch sleeve underarm seams and side seams. Clip seam allowances along curves and finish seams with bias binding (illustration 1). Fold finished seam allowances at sleeve edges and bottom-hem edge toward back panel and machine-baste them in place. Finish front edges, outer edges of collar, bottom-hem edge and sleeve edges with bias binding (illustration 1), stretching binding slightly along curved edges.

Snap fasteners: Cut two 20 cm x 10 cm pieces from cotton fabric and bond them wrong sides together with double-sided fusible web. Cut out 12-14 circles 15 mm in diameter from bonded piece. Attach circles at each snap placement on garment's outerwear-fabric side as embellishments and stabilizers. Attach snap fasteners to collar as marked on pattern. Attach topmost snap on front panel 6 cm down from neckline seam, placing it on center-front line, and lowest snap 10-15 cm up from bottom-hem edge. Attach the rest of snaps at regular intervals between these.

Illustration 1

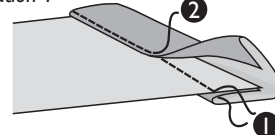
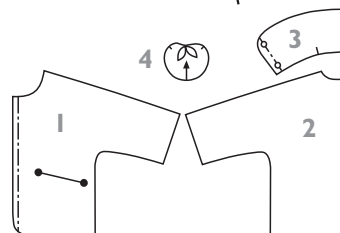
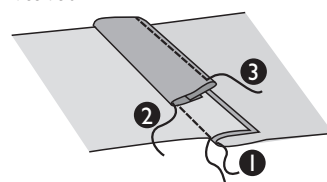


Illustration 2



PATTERN PIECES

1 front

2 back

3 collar

4 pocket

leaf embellishment

cut 2

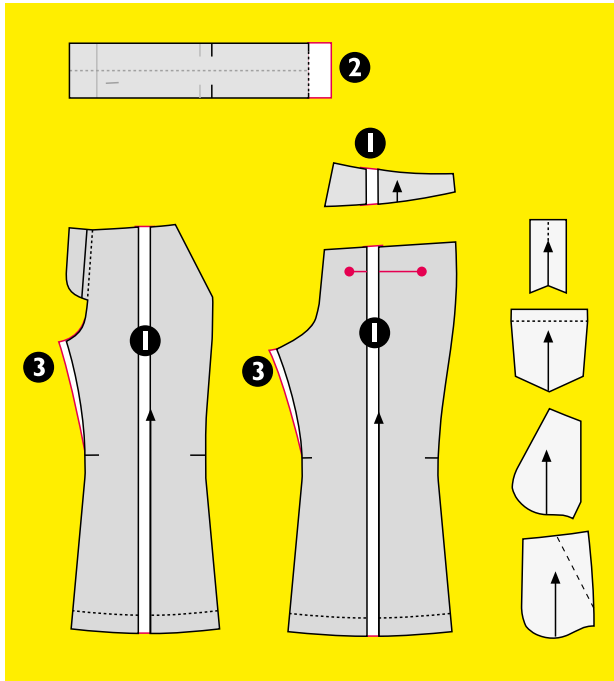
1

1

2

4

PATTERN SHEET A red



CONVERTING A SLIM PANTS PATTERN INTO A REGULAR-SIZE PATTERN

Design no. 12

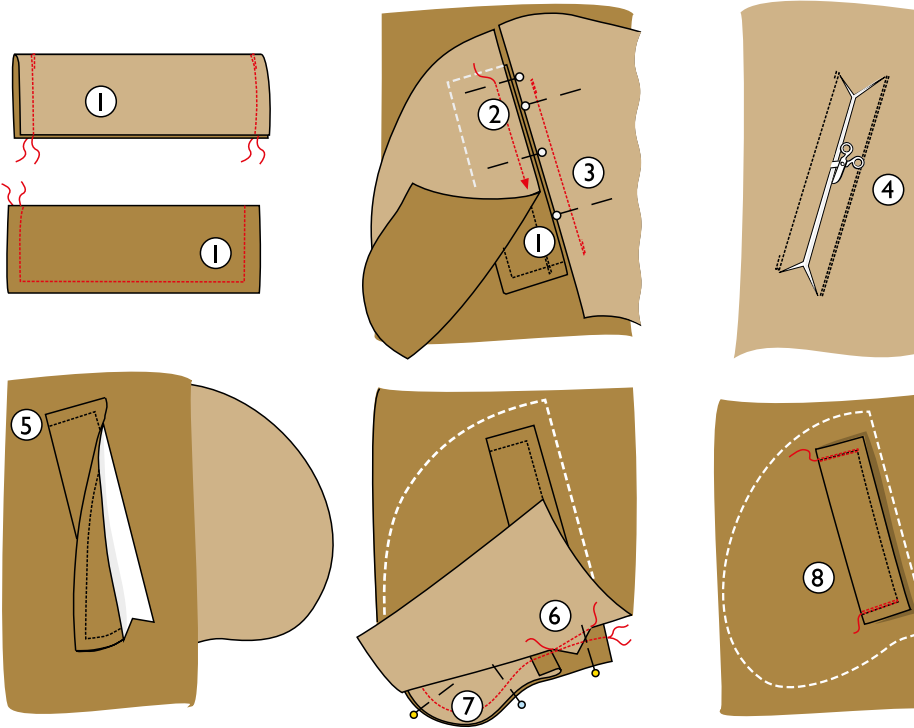
Design no. 12 is intended for a very slim child whose waist and hip measurements are 4 cm smaller than those in the size chart. You can modify the slim pants pattern to correspond to the regular-fit size chart as follows:

1. Cut the pattern pieces for the pants front and back panels as well as the back yoke in half down the middle. Glue the halves of each pattern piece on paper, leaving a 1 cm gap between them.

2. Add 2 cm to the length of the waistband and move the notch for the side seam 1 cm toward the back portion of the waistband.

3. Add 0.5...0.7 cm to the length of the crotch seam on both the pants front and back panel.

Cut and sew the pants following the instructions for design no. 12.



WELT POCKET

Design no. 36

1. Fold pocket-welt piece in half, right sides together, and stitch its side edges. Turn welt right side out and topstitch it using presser-foot edge as guide. Pin and stitch open edge of welt to pocket opening as marked on pattern.

2. Pin outer pocket piece on top of welt, right sides together, and stitch along previous stitching line.

3. Pin and stitch inner pocket piece to pocket opening. Note! Stitching line is slightly shorter than finished length of welt.

4. Slash pocket opening from wrong side and clip diagonally to stitching at corners.

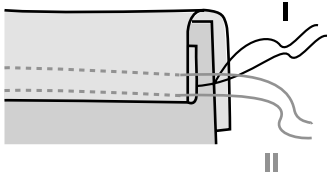
5. Turn pocket pieces to inside.

6. Stitch triangles, formed when slashing pocket opening, to pocket piece.

7. Stitch pocket pieces together.

8. Topstitch side edges of pocket welt to garment.

EDGE FINISH WITH KNIT BINDING



Measure the length of the edge to be finished (=X cm) on the pattern piece.

Determine the length of the binding:

Binding cut from T-shirt knit
(stretch/recovery 20-30%)

Length of binding = X cm x 0.85

Binding cut from ribbing
(stretch/recovery 40-50%)

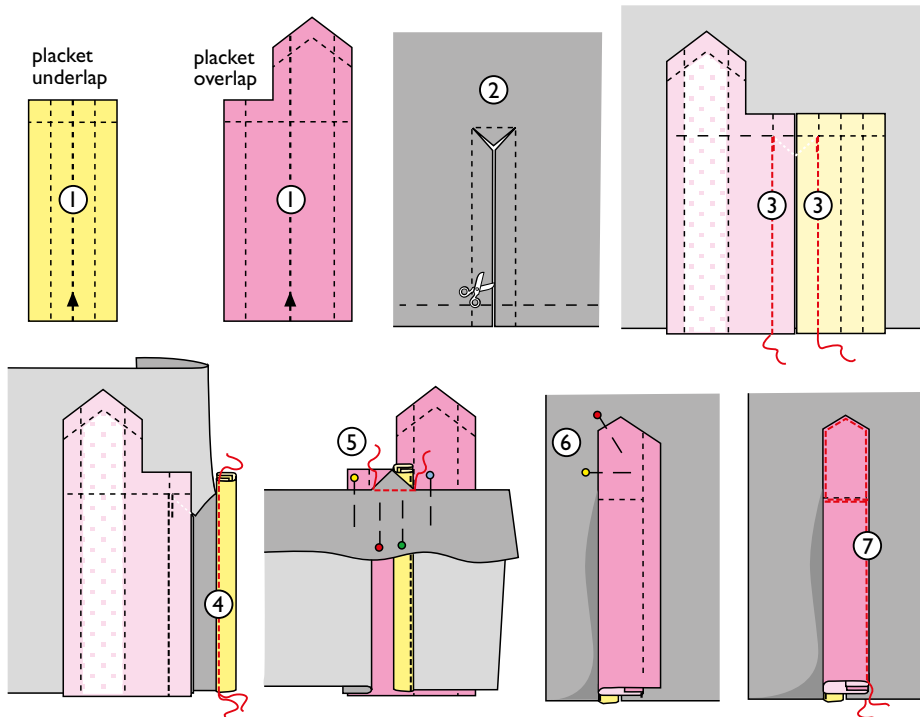
Length of binding = X cm x 0.70

Note! As the elasticity of different knits tends to vary, the length of the binding should be checked by experimenting on a piece of scrap fabric before applying the binding to the garment.

Applying the binding

Stitch one edge of binding to garment's edge, right sides together (I). Fold the other edge of binding over to wrong side and topstitch binding with twin needle from right side close to edge (II).

In order to make a neckline elastic enough, stretch both the neck edge and the binding as you sew.



CUFF PLACKET

design no. 28

1. Cut cuff placket underlap and overlap from fabric; patterns include seam allowances. (Fuse interfacing to overlap pieces as marked on pattern.) Fold underlap and overlap pieces in half, wrong sides together, and press creases at folds.
2. Mark placket opening on sleeve as marked on pattern and slash opening carefully.
3. Pin underlap and overlap to placket opening (right sides of underlap and overlap facing wrong side of sleeve) and stitch them in place; stitching on both sides of placket opening must be of equal length and end exactly at slashed top corner of opening.
4. Fold sleeve edge right sides together along placket opening. Fold seam allowance at edge of underlap under and stitch folded edge to placket opening.
5. At top of placket opening, pin triangular piece to underlap and to seam allowance of overlap and stitch it in place from right side of placket.
6. Fold overlap to right side of sleeve. Fold and pin seam allowances at top end and right-hand edge of overlap under.
7. Stitch top end and edges of overlap to placket opening.

PRINT

Design no. 29

You need:

- fabric paint, Gütermann
- scalpel or small sharp scissors
- plastic sheeting (e.g. plastic pocket) for stencil
- painter's tape
- disposable plate and spoon
- piece of sponge

How to do it:

1. Trace motif from pattern sheet on plastic sheeting and cut shaded parts of motif out.

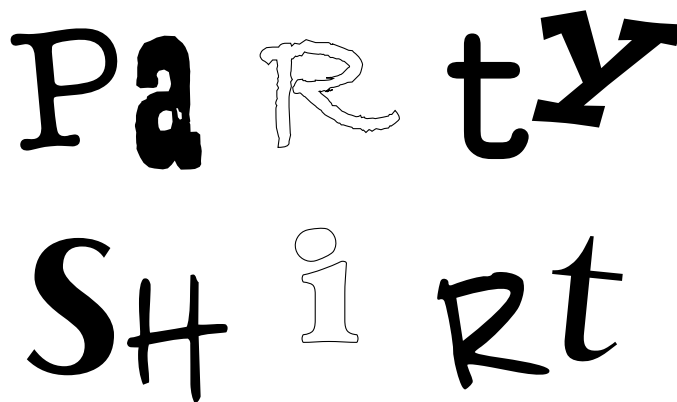
2. Secure edges of stencil to garment or fabric with painter's tape and cover rest of garment to protect it from paint splashes.

3. Pour a small amount of paint on disposable plate and dab sponge in it so that paint gets evenly distributed on sponge.

4. Dab a small amount of paint at a time on fabric through stencil cutouts with sponge.

5. Allow print to dry properly and fix it to fabric by pressing, following directions on paint container.

Experiment printing on a scrap of fabric before starting!



FLY-FRONT ZIPPER

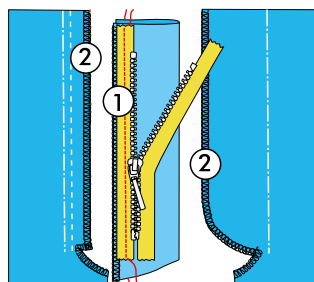
Designs no.

12, 31

The zipper application is for boys' pants. For girls' pants, interchange left and right in the instructions.

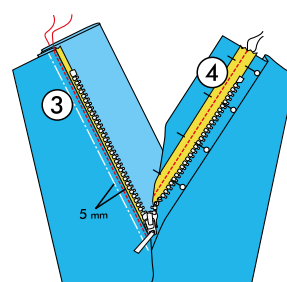
1. Construct fly shield. Fold fly shield piece in half, right sides together, and stitch bottom edges together. Turn shield right side out and serge or zigzag raw long edges together. Stitch zipper tape to fly shield.

2. Finish raw edges of zipper placket.



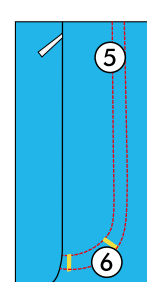
3. Fold seam allowance on narrower edge of zipper placket to wrong side. Pin and stitch fly shield under placket edge.

4. Pin other zipper tape to fly facing



from wrong side, open zipper and stitch it in place.

5. Topstitch fly facing to garment's front. Fold fly shield out of the way



as you sew.

(6. Stitch bar-tack using short zigzag stitch at bottom of placket, catching in fly shield.

Frequently used measurements

metric		inches	feet
5 mm	0.5 cm	$\frac{3}{16}$	
10 mm	1.0 cm	$\frac{3}{8}$	
15 mm	1.5 cm	$\frac{5}{8}$	
20 mm	2.0 cm	$\frac{7}{8}$	
25 mm	2.5 cm	1	
30 mm	3.0 cm	$1\frac{1}{16}$	
35 mm	3.5 cm	$1\frac{3}{8}$	
40 mm	4.0 cm	$1\frac{9}{16}$	
45 mm	4.5 cm	$1\frac{3}{4}$	
50 mm	5.0 cm	2	
10 cm		$3\frac{15}{16}$	
12 cm		$4\frac{3}{4}$	
15 cm		$5\frac{15}{16}$	
18 cm		$7\frac{1}{8}$	
20 cm		$7\frac{7}{8}$	
25 cm		$9\frac{7}{8}$	
30 cm		$11\frac{13}{16}$	
35 cm		$13\frac{3}{4}$	1' 1 $\frac{3}{4}$ "
40 cm		$15\frac{3}{4}$	1' 3 $\frac{3}{4}$ "
45 cm		$17\frac{3}{4}$	1' 5 $\frac{3}{4}$ "
50 cm		$19\frac{11}{16}$	1' 7 $\frac{11}{16}$ "
60 cm		$23\frac{3}{8}$	1' 11 $\frac{3}{8}$ "
70 cm		$27\frac{7}{16}$	2' 3 $\frac{7}{16}$ "
80 cm		$31\frac{1}{2}$	2' 7 $\frac{1}{2}$ "
90 cm		$35\frac{5}{16}$	2' 11 $\frac{5}{16}$ "
100 cm	1 m	$39\frac{3}{8}$	3' 3 $\frac{3}{8}$ "
200 cm	2 m	$78\frac{3}{4}$	6' 6 $\frac{3}{4}$ "
	3 m	$118\frac{1}{8}$	9' 10 $\frac{1}{8}$ "
	4 m	$157\frac{1}{2}$	13' 1 $\frac{1}{2}$ "
	5 m	$196\frac{7}{8}$	16' 4 $\frac{7}{8}$ "



News for our U.S. readers!

It is now also possible to subscribe to OTTOBRE design® magazine through our U.S. OTTOBRE agent

The Woolly Thread
www.woolythread.com

BABIES 56-86 cm / 22"-33 $\frac{7}{8}$ "

Height cm	56	62	68	74	80	86
Height inches	22	24 $\frac{3}{8}$	26 $\frac{3}{4}$	29 $\frac{7}{8}$	31 $\frac{1}{2}$	33 $\frac{7}{8}$
1. Chest measurement	17 $\frac{1}{2}$	18 $\frac{1}{8}$	18 $\frac{3}{4}$	19 $\frac{1}{4}$	19 $\frac{7}{8}$	20 $\frac{1}{2}$
2. Waist measurement	18 $\frac{1}{2}$	18 $\frac{1}{8}$	19 $\frac{1}{4}$	19 $\frac{3}{4}$	20 $\frac{1}{8}$	20 $\frac{1}{2}$
3. Hip measurement	20 $\frac{1}{2}$	20 $\frac{7}{8}$	21 $\frac{1}{4}$	21 $\frac{1}{8}$	22	22 $\frac{1}{2}$
4. Sleeve length	7 $\frac{7}{8}$	8 $\frac{1}{8}$	9 $\frac{1}{2}$	10 $\frac{1}{4}$	11	11 $\frac{3}{4}$
5. Inseam length	7 $\frac{1}{8}$	8 $\frac{1}{4}$	9 $\frac{1}{2}$	10 $\frac{5}{8}$	11 $\frac{3}{4}$	13 $\frac{1}{4}$

GIRLS AND BOYS 92-122 cm / 36 $\frac{1}{4}$ "-48"

Height cm	92	98	104	110	116	122
Height inches	36 $\frac{1}{4}$	38 $\frac{5}{8}$	41	43 $\frac{3}{4}$	45 $\frac{5}{8}$	48
1. Chest measurement	21 $\frac{1}{4}$	22	22 $\frac{7}{8}$	23 $\frac{3}{8}$	24 $\frac{3}{8}$	25 $\frac{1}{4}$
2. Waist measurement	20 $\frac{7}{8}$	21 $\frac{1}{4}$	21 $\frac{5}{8}$	22	22 $\frac{1}{2}$	22 $\frac{7}{8}$
3. Hip measurement	22 $\frac{7}{8}$	23 $\frac{3}{8}$	24 $\frac{3}{8}$	25 $\frac{1}{4}$	26	26 $\frac{3}{4}$
4. Back waist length	8 $\frac{7}{8}$	9 $\frac{1}{2}$	9 $\frac{7}{8}$	10 $\frac{3}{8}$	11	11 $\frac{5}{8}$
5. Sleeve length	12 $\frac{3}{8}$	13 $\frac{3}{8}$	14 $\frac{1}{8}$	15	15 $\frac{3}{4}$	16 $\frac{1}{2}$
6. Outseam length	21 $\frac{1}{4}$	22 $\frac{7}{8}$	24 $\frac{3}{8}$	26	27 $\frac{1}{2}$	29 $\frac{1}{8}$
7. Shoulder width	3 $\frac{3}{8}$	3 $\frac{1}{4}$	3 $\frac{1}{2}$	3 $\frac{3}{4}$	3 $\frac{3}{4}$	4

GIRLS 128-170 cm / 50 $\frac{3}{8}$ "-66 $\frac{7}{8}$ "

Height cm	128	134	140	146	152	158	164	170
Height inches	50 $\frac{3}{8}$	52 $\frac{3}{4}$	55 $\frac{1}{2}$	57 $\frac{1}{2}$	59 $\frac{7}{8}$	62 $\frac{1}{4}$	64 $\frac{3}{8}$	66 $\frac{7}{8}$
1. Bust measurement	26	26 $\frac{3}{4}$	28	28 $\frac{3}{4}$	29 $\frac{7}{8}$	31 $\frac{1}{8}$	32 $\frac{1}{4}$	33 $\frac{1}{2}$
2. Waist measurement	23 $\frac{3}{4}$	24	24 $\frac{3}{4}$	25 $\frac{1}{4}$	26	26 $\frac{3}{4}$	27 $\frac{1}{2}$	28 $\frac{3}{8}$
3. Hip measurement	27 $\frac{1}{2}$	28 $\frac{3}{8}$	29 $\frac{1}{2}$	31 $\frac{1}{8}$	32 $\frac{1}{4}$	33 $\frac{1}{2}$	34 $\frac{3}{8}$	35 $\frac{7}{8}$
4. Back waist length	12 $\frac{1}{4}$	12 $\frac{3}{4}$	13 $\frac{3}{8}$	14	14 $\frac{1}{2}$	15 $\frac{1}{8}$	15 $\frac{3}{4}$	16 $\frac{3}{8}$
5. Sleeve length	17 $\frac{3}{8}$	18 $\frac{1}{8}$	19 $\frac{1}{4}$	19 $\frac{3}{4}$	20 $\frac{1}{2}$	21 $\frac{1}{2}$	22 $\frac{1}{2}$	23 $\frac{3}{8}$
6. Outseam length	30 $\frac{3}{4}$	32 $\frac{1}{4}$	33 $\frac{3}{8}$	35 $\frac{3}{8}$	36 $\frac{3}{4}$	38 $\frac{1}{4}$	39 $\frac{3}{8}$	41 $\frac{1}{8}$
7. Shoulder width	4 $\frac{1}{8}$	4 $\frac{1}{4}$	4 $\frac{3}{8}$	4 $\frac{1}{2}$	4 $\frac{3}{4}$	4 $\frac{7}{8}$	5	5 $\frac{1}{4}$

BOYS 128-170 cm / 50 $\frac{3}{8}$ "-66 $\frac{7}{8}$ "

Height cm	128	134	140	146	152	158	164	170
Height inches	50 $\frac{3}{8}$	52 $\frac{3}{4}$	55 $\frac{1}{2}$	57 $\frac{1}{2}$	59 $\frac{7}{8}$	62 $\frac{1}{4}$	64 $\frac{3}{8}$	66 $\frac{7}{8}$
1. Chest measurement	26	26 $\frac{3}{4}$	28	29 $\frac{1}{2}$	30 $\frac{3}{4}$	31 $\frac{1}{8}$	33 $\frac{1}{8}$	34 $\frac{1}{4}$
2. Waist measurement	23 $\frac{3}{4}$	24	24 $\frac{3}{4}$	26	26 $\frac{3}{4}$	27 $\frac{1}{2}$	28 $\frac{3}{8}$	29 $\frac{1}{8}$
3. Hip measurement	27 $\frac{1}{2}$	28 $\frac{3}{8}$	29 $\frac{1}{2}$	30 $\frac{3}{4}$	31 $\frac{1}{8}$	33 $\frac{1}{8}$	34 $\frac{1}{4}$	35 $\frac{7}{8}$
4. Back waist length	12 $\frac{1}{4}$	12 $\frac{3}{4}$	13 $\frac{3}{8}$	14	14 $\frac{1}{2}$	15 $\frac{1}{8}$	16 $\frac{1}{8}$	16 $\frac{3}{8}$
5. Sleeve length	17 $\frac{3}{8}$	18 $\frac{1}{8}$	19 $\frac{1}{4}$	20 $\frac{1}{4}$	21 $\frac{1}{4}$	22 $\frac{1}{4}$	23 $\frac{1}{4}$	24 $\frac{1}{4}$
6. Outseam length	30 $\frac{3}{4}$	32 $\frac{1}{4}$	33 $\frac{3}{8}$	35 $\frac{3}{8}$	36 $\frac{3}{4}$	38 $\frac{1}{4}$	39 $\frac{3}{8}$	41
7. Shoulder width	4 $\frac{1}{8}$	4 $\frac{1}{4}$	4 $\frac{3}{8}$	4 $\frac{1}{2}$	4 $\frac{3}{4}$	4 $\frac{7}{8}$	5 $\frac{1}{8}$	5 $\frac{1}{4}$

